

# TBL1XR1 Rabbit Polyclonal Antibody



CAB7834

## Product Information

### Size:

20uL, 50uL, 100uL, 200uL

### Observed MW:

60kDa

### Calculated MW:

55kDa

### Applications:

WB IHC

### Reactivity:

Human, Mouse

## Antibody Information

### Recommended dilutions:

WB 1:500 - 1:2000 IHC 1:50  
- 1:200

### Source:

Rabbit

### Isotype:

IgG

### Purification:

Affinity purification

## Protein Background

This gene is a member of the WD40 repeat-containing gene family and shares sequence similarity with transducin (beta)-like 1X-linked (TBL1X). The protein encoded by this gene is thought to be a component of both nuclear receptor corepressor (N-CoR) and histone deacetylase 3 (HDAC 3) complexes, and is required for transcriptional activation by a variety of transcription factors. Mutations in these gene have been associated with some autism spectrum disorders, and one finding suggests that haploinsufficiency of this gene may be a cause of intellectual disability with dysmorphism. Mutations in this gene as well as recurrent translocations involving this gene have also been observed in some tumors.

## Immunogen information

### Gene ID:

79718

### Uniprot

Q9BZK7

### Synonyms:

TBL1XR1; C21; DC42; IRA1; MRD41; TBLR1

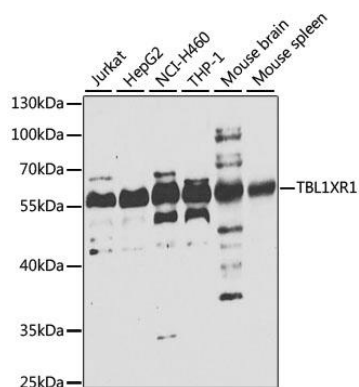
### Immunogen:

Recombinant fusion protein containing a sequence corresponding to amino acids 1-180 of human TBL1XR1 (NP\_078941.2).

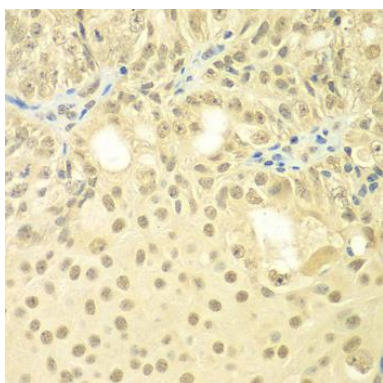
### Storage:

Store at -20°C. Avoid freeze / thaw cycles. Buffer: PBS with 0.02% sodium azide, 50% glycerol, pH7.3.

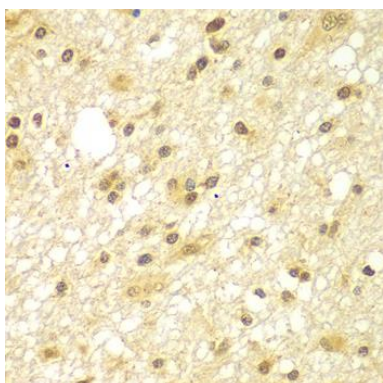
## Product Images



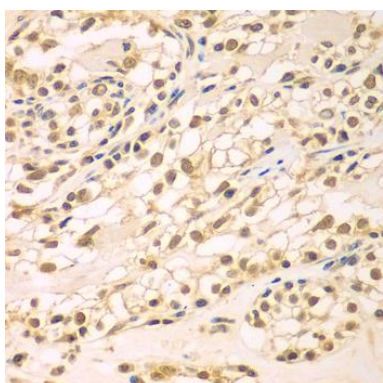
Western blot analysis of extracts of various cell lines, using TBL1XR1 antibody (CAB7834) at 1:1000 dilution. Secondary antibody: HRP Goat Anti-Rabbit IgG (H+L) (CABS014) at 1:10000 dilution. Lysates/proteins: 25ug per lane. Blocking buffer: 3% nonfat dry milk in TBST. Detection: ECL Basic Kit (CABM00020). Exposure time: 10s.



Immunohistochemistry of paraffin-embedded human oophoroma using TBL1XR1 antibody (CAB7834) at dilution of 1:100 (40x lens).



Immunohistochemistry of paraffin-embedded human brain cancer using TBL1XR1 antibody (CAB7834) at dilution of 1:100 (40x lens).



Immunohistochemistry of paraffin-embedded human kidney using TBL1XR1 antibody (CAB7834) at dilution of 1:100 (40x lens).