

TM2D1 Rabbit Polyclonal Antibody



CAB7840

Product Information

Size:

20uL, 50uL, 100uL, 200uL

Observed MW:

30kDa

Calculated MW:

22kDa

Applications:

WB

Reactivity:

Human, Mouse, Rat

Antibody Information

Recommended dilutions:

WB 1:500 - 1:2000

Source:

Rabbit

Isotype:

IgG

Purification:

Affinity purification

Protein Background

The protein encoded by this gene is a beta-amyloid peptide-binding protein. It contains a structural module related to that of the seven transmembrane domain G protein-coupled receptor superfamily and known to be important in heterotrimeric G protein activation. Beta-amyloid peptide has been established to be a causative factor in neuron death and the consequent diminution of cognitive abilities observed in Alzheimer's disease. This protein may be a target of neurotoxic beta-amyloid peptide, and may mediate cellular vulnerability to beta-amyloid peptide toxicity through a G protein-regulated program of cell death. Several transcript variants have been found for this gene.

Immunogen information

Gene ID:

83941

Uniprot

Q9BX74

Synonyms:

TM2D1; BBP

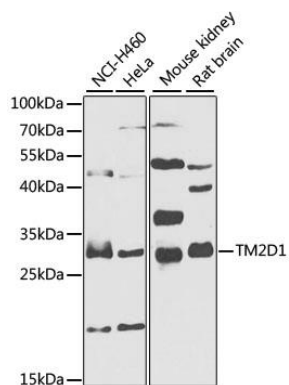
Immunogen:

Recombinant fusion protein containing a sequence corresponding to amino acids 38-207 of human TM2D1 (NP_114416.1).

Storage:

Store at -20°C. Avoid freeze / thaw cycles. Buffer: PBS with 0.02% sodium azide, 50% glycerol, pH7.3.

Product Images



Western blot analysis of extracts of various cell lines, using TM2D1 antibody (CAB7840) at 1:1000 dilution. Secondary antibody: HRP Goat Anti-Rabbit IgG (H+L) (CABS014) at 1:10000 dilution. Lysates/proteins: 25ug per lane. Blocking buffer: 3% nonfat dry milk in TBST. Detection: ECL Basic Kit (CABM00020). Exposure time: 90s.