

PLCD4 Rabbit Polyclonal Antibody



CAB7841

Product Information

Size:

20uL, 50uL, 100uL, 200uL

Observed MW:

110kDa

Calculated MW:

31kDa/87kDa

Applications:

WB IF

Reactivity:

Human, Mouse, Rat

Protein Background

This gene encodes a member of the delta class of phospholipase C enzymes. Phospholipase C enzymes play a critical role in many cellular processes by hydrolyzing phosphatidylinositol 4, 5-bisphosphate into two intracellular second messengers, inositol 1, 4, 5-trisphosphate and diacylglycerol. Expression of this gene may be a marker for cancer.

Immunogen information

Gene ID:

84812

Uniprot

Q9BRC7

Synonyms:

PLCD4

Antibody Information

Recommended dilutions:

WB 1:500 - 1:2000 IF 1:50 - 1:200

Source:

Rabbit

Isotype:

IgG

Purification:

Affinity purification

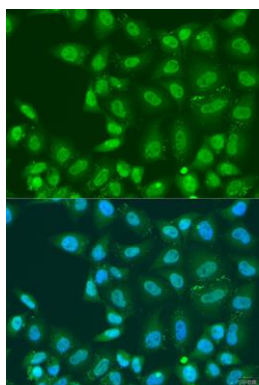
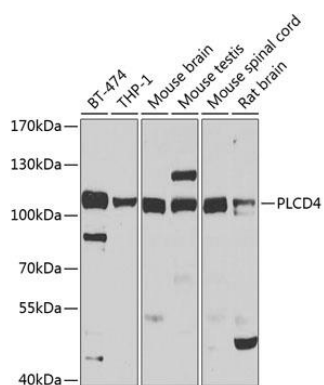
Immunogen:

Recombinant fusion protein containing a sequence corresponding to amino acids 1-290 of human PLCD4 (NP_116115.1).

Storage:

Store at -20°C. Avoid freeze / thaw cycles. Buffer: PBS with 0.02% sodium azide, 50% glycerol, pH7.3.

Product Images



Western blot analysis of extracts of various cell lines, using PLCD4 antibody (CAB7841) at 1:1000 dilution. Secondary antibody: HRP Goat Anti-Rabbit IgG (H+L) (CABS014) at 1:10000 dilution. Lysates/proteins: 25ug per lane. Blocking buffer: 3% nonfat dry milk in TBST. Detection: ECL Basic Kit (CABM00020). Exposure time: 30s.

Immunofluorescence analysis of U2OS cells using PLCD4 antibody (CAB7841) at dilution of 1:100. Blue: DAPI for nuclear staining.