

ALG2 Rabbit Polyclonal Antibody



CAB7843

Product Information

Size:

20uL, 50uL, 100uL, 200uL

Observed MW:

47kDa

Calculated MW:

37kDa/47kDa

Applications:

WB IHC

Reactivity:

Human, Mouse

Antibody Information

Recommended dilutions:

WB 1:500 - 1:2000 IHC 1:50
- 1:200

Source:

Rabbit

Isotype:

IgG

Purification:

Affinity purification

Protein Background

This gene encodes a member of the glycosyltransferase 1 family. The encoded protein acts as an alpha 1, 3 mannosyltransferase, mannosylating Man(2)GlcNAc(2)-dolichol diphosphate and Man(1)GlcNAc(2)-dolichol diphosphate to form Man(3)GlcNAc(2)-dolichol diphosphate. Defects in this gene have been associated with congenital disorder of glycosylation type 1h (CDG-1h). Alternative splicing results in multiple transcript variants.

Immunogen information

Gene ID:

85365

Uniprot

Q9H553

Synonyms:

ALG2; CDG11; CDG1i; CMS14; CMSTA3; NET38; hALPG2; alpha-1;
3/1

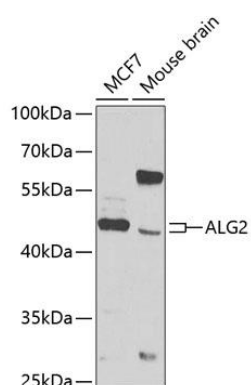
Immunogen:

Recombinant fusion protein containing a sequence corresponding to amino acids 197-416 of human ALG2 (NP_149078.1).

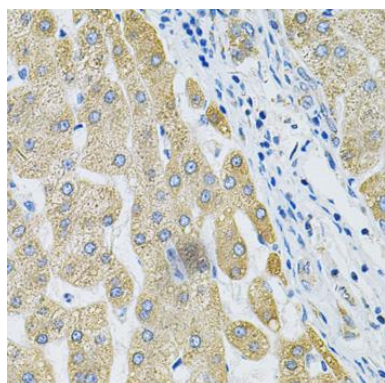
Storage:

Store at -20°C. Avoid freeze / thaw cycles. Buffer: PBS with 0.02% sodium azide, 50% glycerol, pH7.3.

Product Images



Western blot analysis of extracts of various cell lines, using ALG2 antibody (CAB7843) at 1:1000 dilution. Secondary antibody: HRP Goat Anti-Rabbit IgG (H+L) (CABS014) at 1:10000 dilution. Lysates/proteins: 25ug per lane. Blocking buffer: 3% nonfat dry milk in TBST. Detection: ECL Basic Kit (CABM00020). Exposure time: 90s.



Immunohistochemistry of paraffin-embedded human liver cancer using ALG2 Antibody (CAB7843) at dilution of 1:100 (40x lens).