

CHRFAM7A Rabbit Polyclonal Antibody



CAB7844

Product Information

Size:

20uL, 50uL, 100uL, 200uL

Observed MW:

46kDa

Calculated MW:

46kDa

Applications:

WB IHC

Reactivity:

Human, Mouse, Rat

Antibody Information

Recommended dilutions:

WB 1:500 - 1:2000 IHC 1:50
- 1:200

Source:

Rabbit

Isotype:

IgG

Purification:

Affinity purification

Protein Background

The nicotinic acetylcholine receptors (nAChRs) are members of a superfamily of ligand-gated ion channels that mediate fast signal transmission at synapses. The family member CHRNA7, which is located on chromosome 15 in a region associated with several neuropsychiatric disorders, is partially duplicated and forms a hybrid with a novel gene from the family with sequence similarity 7 (FAM7A). Alternative splicing has been observed, and two variants exist, for this hybrid gene. The N-terminally truncated products predicted by the largest open reading frames for each variant would lack the majority of the neurotransmitter-gated ion-channel ligand binding domain but retain the transmembrane region that forms the ion channel. Although current evidence supports transcription of this hybrid gene, translation of the nicotinic acetylcholine receptor-like protein-encoding open reading frames has not been confirmed.

Immunogen information

Gene ID:

89832

Uniprot

Q494W8

Synonyms:

CHRFAM7A; CHRNA7; CHRNA7-DR1; D-10

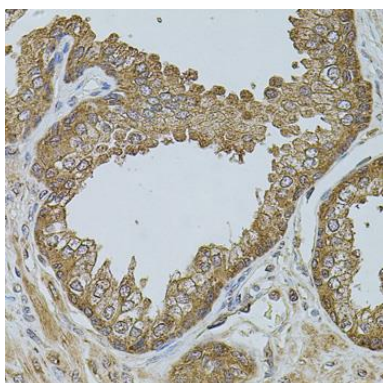
Immunogen:

Recombinant fusion protein containing a sequence corresponding to amino acids 1-150 of human CHRFAM7A (NP_647536.1).

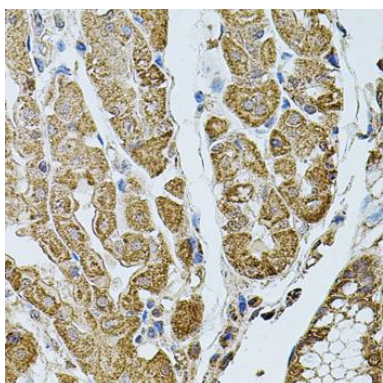
Storage:

Store at -20°C. Avoid freeze / thaw cycles. Buffer: PBS with 0.02% sodium azide, 50% glycerol, pH7.3.

Product Images



Immunohistochemistry of paraffin-embedded human prostate using CHR FAM7A antibody (CAB7844) at dilution of 1:100 (40x lens).



Immunohistochemistry of paraffin-embedded human stomach using CHR FAM7A antibody (CAB7844) at dilution of 1:100 (40x lens).