

# NDUFS7 Rabbit Polyclonal Antibody



CAB7862

## Product Information

### Size:

20uL, 50uL, 100uL, 200uL

### Observed MW:

24kDa

### Calculated MW:

22kDa/23kDa

### Applications:

WB IHC IF

### Reactivity:

Human, Mouse, Rat

## Protein Background

This gene encodes a protein that is a subunit of one of the complexes that forms the mitochondrial respiratory chain. This protein is one of over 40 subunits found in complex I, the nicotinamide adenine dinucleotide (NADH):ubiquinone oxidoreductase. This complex functions in the transfer of electrons from NADH to the respiratory chain, and ubiquinone is believed to be the immediate electron acceptor for the enzyme. Mutations in this gene cause Leigh syndrome due to mitochondrial complex I deficiency, a severe neurological disorder that results in bilaterally symmetrical necrotic lesions in subcortical brain regions.

## Immunogen information

### Gene ID:

374291

### Uniprot

O75251

### Synonyms:

NDUFS7; CI-20; CI-20KD; MY017; PSST

## Antibody Information

### Recommended dilutions:

WB 1:500 - 1:2000 IHC 1:50  
- 1:100 IF 1:50 - 1:100

### Source:

Rabbit

### Isotype:

IgG

### Purification:

Affinity purification

### Immunogen:

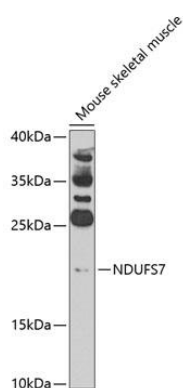
Recombinant fusion protein containing a sequence corresponding to amino acids 39-213 of human NDUFS7 (NP\_077718.3).

### Storage:

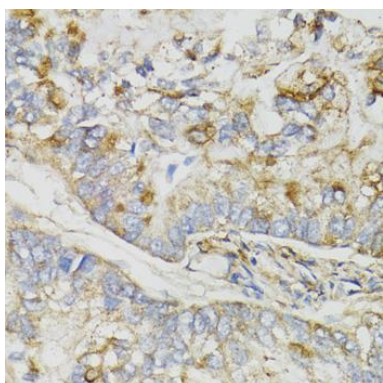
Store at -20°C. Avoid freeze / thaw cycles. Buffer: PBS with 0.02% sodium azide, 50% glycerol, pH7.3.

## Product Images

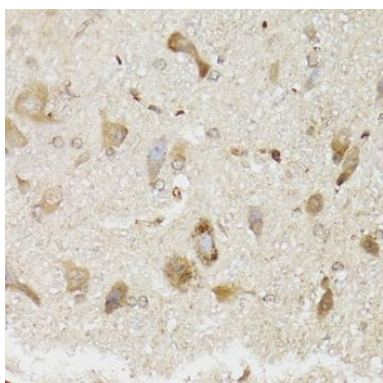
---



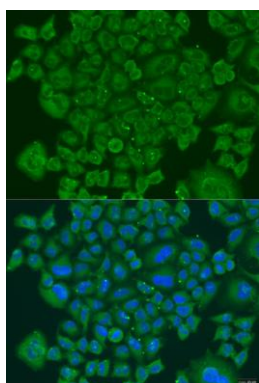
Western blot analysis of extracts of mouse skeletal muscle, using NDUFS7 antibody (CAB7862) at 1:1000 dilution. Secondary antibody: HRP Goat Anti-Rabbit IgG (H+L) (CABS014) at 1:10000 dilution. Lysates/proteins: 25ug per lane. Blocking buffer: 3% nonfat dry milk in TBST. Detection: ECL Basic Kit (CABM00020). Exposure time: 90s.



Immunohistochemistry of paraffin-embedded human gastric cancer using NDUFS7 antibody (CAB7862) at dilution of 1:100 (40x lens).



Immunohistochemistry of paraffin-embedded mouse brain using NDUFS7 antibody (CAB7862) at dilution of 1:100 (40x lens).



Immunofluorescence analysis of U2OS cells using NDUFS7 antibody (CAB7862) at dilution of 1:100. Blue: DAPI for nuclear staining.