

# ADRA1A Rabbit Polyclonal Antibody



CAB7873

## Product Information

### Size:

20uL, 50uL, 100uL, 200uL

### Observed MW:

60kDa

### Calculated MW:

32-52kDa

### Applications:

WB IHC IF

### Reactivity:

Human, Mouse, Rat

## Antibody Information

### Recommended dilutions:

WB 1:500 - 1:2000 IHC 1:50  
- 1:100 IF 1:50 - 1:200

### Source:

Rabbit

### Isotype:

IgG

### Purification:

Affinity purification

## Protein Background

Alpha-1-adrenergic receptors (alpha-1-ARs) are members of the G protein-coupled receptor superfamily. They activate mitogenic responses and regulate growth and proliferation of many cells. There are 3 alpha-1-AR subtypes: alpha-1A, -1B and -1D, all of which signal through the Gq/11 family of G-proteins and different subtypes show different patterns of activation. This gene encodes alpha-1A-adrenergic receptor. Alternative splicing of this gene generates four transcript variants, which encode four different isoforms with distinct C-termini but having similar ligand binding properties.

## Immunogen information

### Gene ID:

148

### Uniprot

P35348

### Synonyms:

ADRA1A; ADRA1C; ADRA1L1; ALPHA1AAR

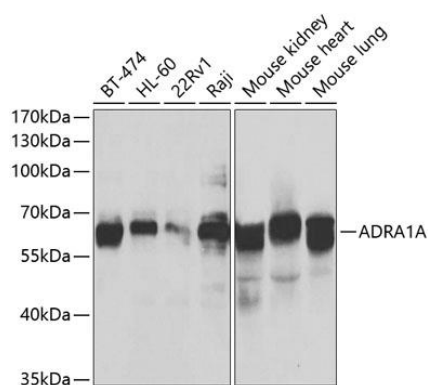
### Immunogen:

A synthetic peptide of human ADRA1A

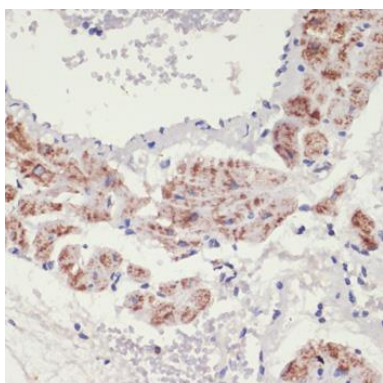
### Storage:

Store at -20°C. Avoid freeze / thaw cycles. Buffer: PBS with 0.02% sodium azide, 50% glycerol, pH7.3.

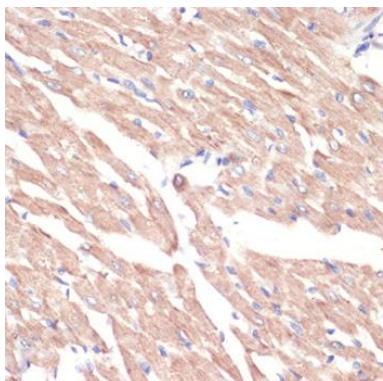
## Product Images



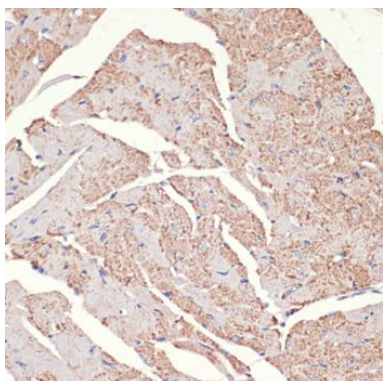
Western blot analysis of extracts of various cell lines, using ADRA1A antibody (CAB7873) at 1:500 dilution. Secondary antibody: HRP Goat Anti-Rabbit IgG (H+L) (CABS014) at 1:10000 dilution. Lysates/proteins: 25ug per lane. Blocking buffer: 3% nonfat dry milk in TBST. Detection: ECL Enhanced Kit (CABM00021). Exposure time: 30s.



Immunohistochemistry of paraffin-embedded rat lung using ADRA1A antibody (CAB7873) at dilution of 1:100 (40x lens).



Immunohistochemistry of paraffin-embedded rat heart using ADRA1A antibody (CAB7873) at dilution of 1:100 (40x lens).



Immunohistochemistry of paraffin-embedded mouse heart using ADRA1A antibody (CAB7873) at dilution of 1:100 (40x lens).