

ALDH9A1 Rabbit Polyclonal Antibody



CAB7875

Product Information

Size:

20uL, 50uL, 100uL, 200uL

Observed MW:

54kDa

Calculated MW:

46kDa/53kDa

Applications:

WB IHC IF

Reactivity:

Human, Mouse, Rat

Protein Background

This protein belongs to the aldehyde dehydrogenase family of proteins. It has a high activity for oxidation of gamma-aminobutyraldehyde and other amino aldehydes. The enzyme catalyzes the dehydrogenation of gamma-aminobutyraldehyde to gamma-aminobutyric acid (GABA). This isozyme is a tetramer of identical 54-kD subunits.

Immunogen information

Gene ID:

223

Uniprot

P49189

Synonyms:

ALDH9A1; ALDH4; ALDH7; ALDH9; E3; TMABADH

Antibody Information

Recommended dilutions:

WB 1:500 - 1:2000 IHC 1:50
- 1:100 IF 1:50 - 1:200

Source:

Rabbit

Isotype:

IgG

Purification:

Affinity purification

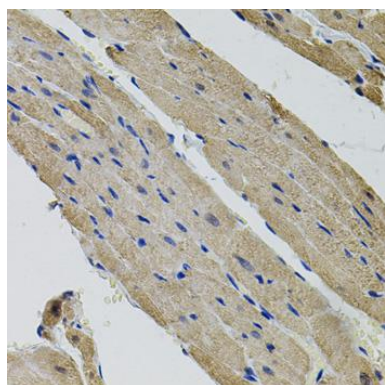
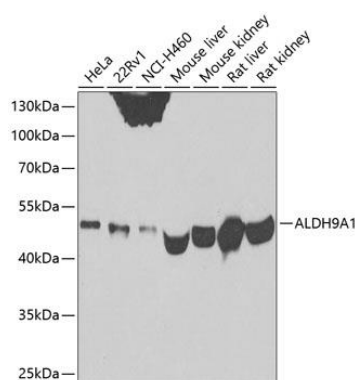
Immunogen:

A synthetic peptide of human ALDH9A1

Storage:

Store at -20°C. Avoid freeze / thaw cycles. Buffer: PBS with 0.02% sodium azide, 50% glycerol, pH7.3.

Product Images



Western blot analysis of extracts of various cell lines, using ALDH9A1 antibody (CAB7875) at 1:500 dilution. Secondary antibody: HRP Goat Anti-Rabbit IgG (H+L) (CABS014) at 1:10000 dilution. Lysates/proteins: 25ug per lane. Blocking buffer: 3% nonfat dry milk in TBST. Detection: ECL Basic Kit (CABM00020). Exposure time: 90s.

Immunohistochemistry of paraffin-embedded rat heart using ALDH9A1 antibody (CAB7875) (40x lens).