

ANGPT1 Rabbit Polyclonal Antibody



CAB7877

Product Information

Size:

20uL, 50uL, 100uL, 200uL

Observed MW:

51kDa

Calculated MW:

57kDa

Applications:

WB IHC

Reactivity:

Human, Mouse, Rat

Antibody Information

Recommended dilutions:

WB 1:500 - 1:2000 IHC 1:50
- 1:100

Source:

Rabbit

Isotype:

IgG

Purification:

Affinity purification

Protein Background

This gene encodes a secreted glycoprotein that belongs to the angiopoietin family. Members of this family play important roles in vascular development and angiogenesis. All angiopoietins bind with similar affinity to an endothelial cell-specific tyrosine-protein kinase receptor. The protein encoded by this gene is a secreted glycoprotein that activates the receptor by inducing its tyrosine phosphorylation. It plays a critical role in mediating reciprocal interactions between the endothelium and surrounding matrix and mesenchyme and inhibits endothelial permeability. The protein also contributes to blood vessel maturation and stability, and may be involved in early development of the heart. Alternative splicing results in multiple transcript variants encoding distinct isoforms.

Immunogen information

Gene ID:

284

Uniprot

Q15389

Synonyms:

ANGPT1; AGP1; AGPT; ANG1

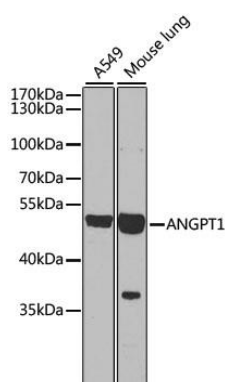
Immunogen:

Recombinant fusion protein containing a sequence corresponding to amino acids 260-400 of human ANGPT1 (NP_001186788.1).

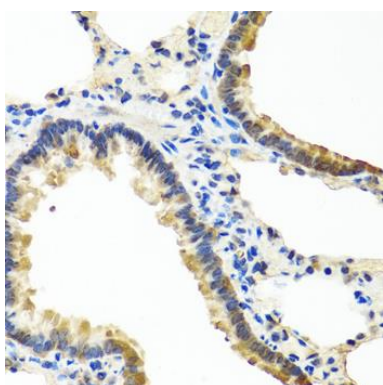
Storage:

Store at -20°C. Avoid freeze / thaw cycles. Buffer: PBS with 0.02% sodium azide, 50% glycerol, pH7.3.

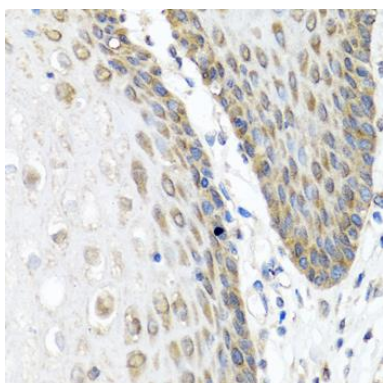
Product Images



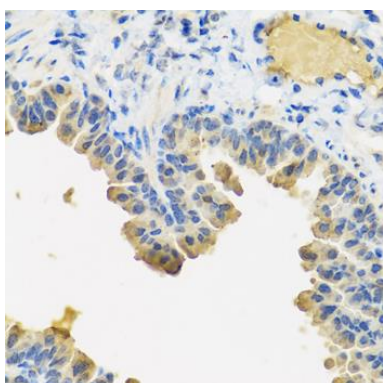
Western blot analysis of extracts of various cell lines, using ANGPT1 antibody (CAB7877) at 1:1000 dilution. Secondary antibody: HRP Goat Anti-Rabbit IgG (H+L) (CABS014) at 1:10000 dilution. Lysates/proteins: 25ug per lane. Blocking buffer: 3% nonfat dry milk in TBST. Detection: ECL Basic Kit (CABM00020). Exposure time: 90s.



Immunohistochemistry of paraffin-embedded rat lung using ANGPT1 antibody (CAB7877) at dilution of 1:100 (40x lens).



Immunohistochemistry of paraffin-embedded human esophagus using ANGPT1 antibody (CAB7877) at dilution of 1:100 (40x lens).



Immunohistochemistry of paraffin-embedded mouse lung using ANGPT1 antibody (CAB7877) at dilution of 1:100 (40x lens).