

BPGM Rabbit Polyclonal Antibody



CAB7880

Product Information

Size:

20uL, 50uL, 100uL, 200uL

Observed MW:

30kDa

Calculated MW:

30kDa

Applications:

WB IHC IF

Reactivity:

Human, Mouse, Rat

Antibody Information

Recommended dilutions:

WB 1:500 - 1:2000 IHC 1:50
- 1:200 IF 1:50 - 1:200

Source:

Rabbit

Isotype:

IgG

Purification:

Affinity purification

Protein Background

2, 3-diphosphoglycerate (2, 3-DPG) is a small molecule found at high concentrations in red blood cells where it binds to and decreases the oxygen affinity of hemoglobin. This gene encodes a multifunctional enzyme that catalyzes 2, 3-DPG synthesis via its synthetase activity, and 2, 3-DPG degradation via its phosphatase activity. The enzyme also has phosphoglycerate phosphomutase activity. Deficiency of this enzyme increases the affinity of cells for oxygen. Mutations in this gene result in hemolytic anemia. Multiple alternatively spliced variants, encoding the same protein, have been identified.

Immunogen information

Gene ID:

669

Uniprot

P07738

Synonyms:

BPGM; DPGM

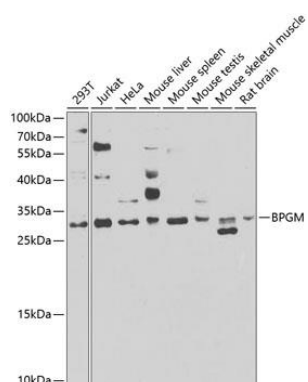
Immunogen:

Recombinant fusion protein containing a sequence corresponding to amino acids 1-259 of human BPGM (NP_001715.1).

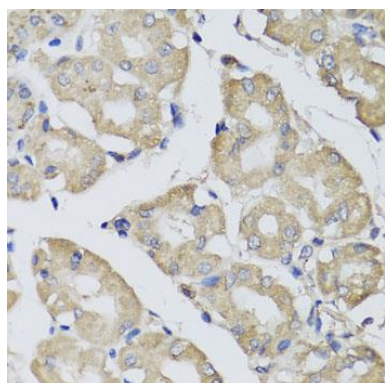
Storage:

Store at -20°C. Avoid freeze / thaw cycles. Buffer: PBS with 0.02% sodium azide, 50% glycerol, pH7.3.

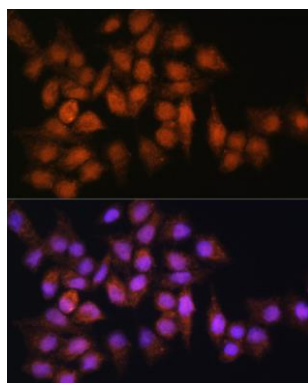
Product Images



Western blot analysis of extracts of various cell lines, using BPGM antibody (CAB7880) at 1:1000 dilution. Secondary antibody: HRP Goat Anti-Rabbit IgG (H+L) (CABS014) at 1:10000 dilution. Lysates/proteins: 25ug per lane. Blocking buffer: 3% nonfat dry milk in TBST. Detection: ECL Basic Kit (CABM00020). Exposure time: 30s.



Immunohistochemistry of paraffin-embedded human stomach using BPGM antibody (CAB7880) at dilution of 1:100 (40x lens).



Immunofluorescence analysis of HeLa cells using BPGM Rabbit pAb (CAB7880) at dilution of 1:100. Blue: DAPI for nuclear staining.