

CDH16 Rabbit Polyclonal Antibody



CAB7882

Product Information

Size:

20uL, 50uL, 100uL, 200uL

Observed MW:

110kDa

Calculated MW:

79kDa/85kDa/87kDa/89kDa

Applications:

WB IHC IF

Reactivity:

Human, Mouse, Rat

Antibody Information

Recommended dilutions:

WB 1:500 - 1:2000 IHC 1:50
- 1:100 IF 1:50 - 1:100

Source:

Rabbit

Isotype:

IgG

Purification:

Affinity purification

Protein Background

This gene is a member of the cadherin superfamily, genes encoding calcium-dependent, membrane-associated glycoproteins. Mapped to a previously identified cluster of cadherin genes on chromosome 16q22.1, the gene localizes with superfamily members CDH1, CDH3, CDH5, CDH8 and CDH11. The protein consists of an extracellular domain containing 6 cadherin domains, a transmembrane region and a truncated cytoplasmic domain but lacks the prosequence and tripeptide HAV adhesion recognition sequence typical of most classical cadherins. Expression is exclusively in kidney, where the protein functions as the principal mediator of homotypic cellular recognition, playing a role in the morphogenic direction of tissue development. Alternatively spliced transcript variants encoding distinct isoforms have been identified.

Immunogen information

Gene ID:

1014

Uniprot

O75309

Synonyms:

CDH16

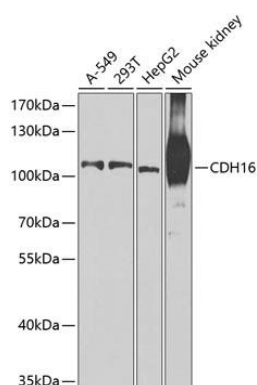
Immunogen:

Recombinant fusion protein containing a sequence corresponding to amino acids 19-230 of human CDH16 (NP_004053.1).

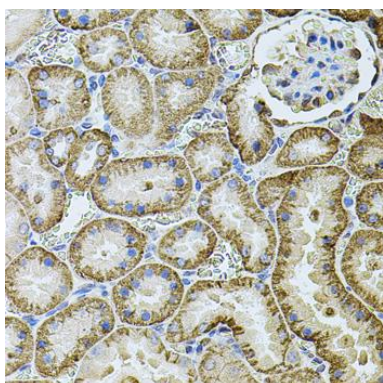
Storage:

Store at -20°C. Avoid freeze / thaw cycles. Buffer: PBS with 0.02% sodium azide, 50% glycerol, pH7.3.

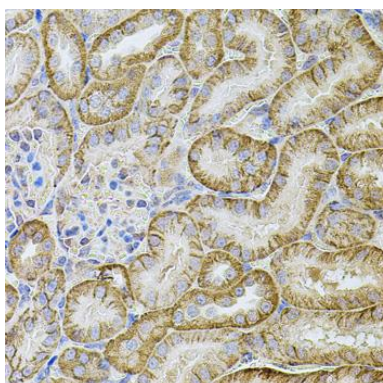
Product Images



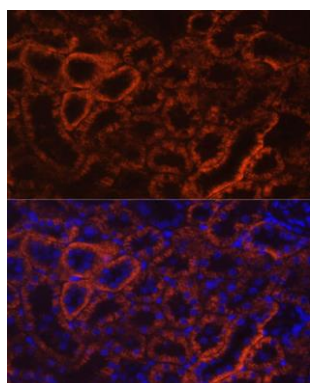
Western blot analysis of extracts of various cell lines, using CDH16 antibody (CAB7882) at 1:1000 dilution. Secondary antibody: HRP Goat Anti-Rabbit IgG (H+L) (CABS014) at 1:10000 dilution. Lysates/proteins: 25ug per lane. Blocking buffer: 3% nonfat dry milk in TBST. Detection: ECL Basic Kit (CABM00020). Exposure time: 90s.



Immunohistochemistry of paraffin-embedded rat kidney using CDH16 antibody (CAB7882) at dilution of 1:100 (40x lens).



Immunohistochemistry of paraffin-embedded mouse kidney using CDH16 antibody (CAB7882) at dilution of 1:100 (40x lens).



Immunofluorescence analysis of rat kidney using CDH16 Polyclonal Antibody (CAB7882) at dilution of 1:100 (40x lens). Blue: DAPI for nuclear staining.