

[KO Validated] CHD1 Rabbit Polyclonal Antibody



CAB7883

Product Information

Size:

20uL, 50uL, 100uL, 200uL

Observed MW:

197kDa

Calculated MW:

196kDa

Applications:

WB IHC

Reactivity:

Human, Mouse, Rat

Protein Background

The CHD family of proteins is characterized by the presence of chromo (chromatin organization modifier) domains and SNF2-related helicase/ATPase domains. CHD genes alter gene expression possibly by modification of chromatin structure thus altering access of the transcriptional apparatus to its chromosomal DNA template.

Immunogen information

Gene ID:

1105

Uniprot

O14646

Synonyms:

CHD1

Antibody Information

Recommended dilutions:

WB 1:500 - 1:2000 IHC

1:100 - 1:200

Source:

Rabbit

Isotype:

IgG

Purification:

Affinity purification

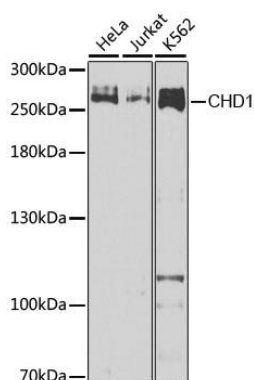
Immunogen:

A synthetic peptide corresponding to a sequence within amino acids 1600 to the C-terminus of human CHD1 (NP_001261.2).

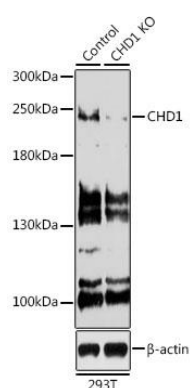
Storage:

Store at -20°C. Avoid freeze / thaw cycles. Buffer: PBS with 0.02% sodium azide, 50% glycerol, pH7.3.

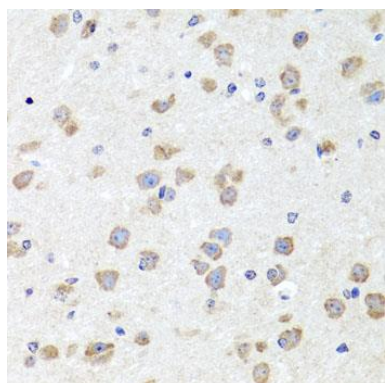
Product Images



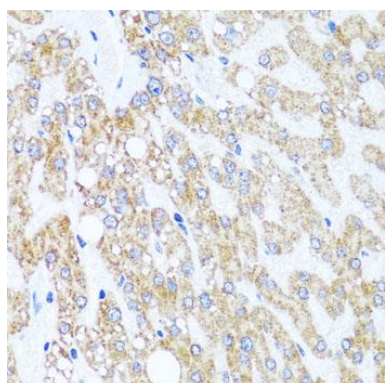
Western blot analysis of extracts of various cell lines, using CHD1 Antibody (CAB7883) at 1:1000 dilution. Secondary antibody: HRP Goat Anti-Rabbit IgG (H+L) (CABS014) at 1:10000 dilution. Lysates/proteins: 25ug per lane. Blocking buffer: 3% nonfat dry milk in TBST. Detection: ECL Basic Kit (CABM00020). Exposure time: 90s.



Western blot analysis of extracts from normal (control) and CHD1 knockout (KO) 293T cells, using CHD1 antibody (CAB7883) at 1:500 dilution. Secondary antibody: HRP Goat Anti-Rabbit IgG (H+L) (CABS014) at 1:10000 dilution. Lysates/proteins: 25ug per lane. Blocking buffer: 3% nonfat dry milk in TBST. Detection: ECL Basic Kit (CABM00020). Exposure time: 90s.



Immunohistochemistry of paraffin-embedded mouse brain using CHD1 antibody (CAB7883) at dilution of 1:100 (40x lens).



Immunohistochemistry of paraffin-embedded human liver damage using CHD1 antibody (CAB7883) at dilution of 1:100 (40x lens).