

# CLTC Rabbit Polyclonal Antibody



CAB7886

## Product Information

### Size:

20uL, 50uL, 100uL, 200uL

### Observed MW:

180kDa

### Calculated MW:

187kDa/191kDa

### Applications:

WB IHC

### Reactivity:

Human, Mouse, Rat

## Protein Background

Clathrin is a major protein component of the cytoplasmic face of intracellular organelles, called coated vesicles and coated pits. These specialized organelles are involved in the intracellular trafficking of receptors and endocytosis of a variety of macromolecules. The basic subunit of the clathrin coat is composed of three heavy chains and three light chains.

## Immunogen information

### Gene ID:

1213

### Uniprot

Q00610

### Synonyms:

CLTC; CHC; CHC17; CLH-17; CLTCL2; Hc

## Antibody Information

### Recommended dilutions:

WB 1:500 - 1:2000 IHC 1:50  
- 1:100

### Source:

Rabbit

### Isotype:

IgG

### Purification:

Affinity purification

### Immunogen:

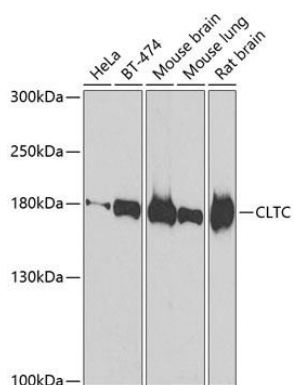
A synthetic peptide of human CLTC

### Storage:

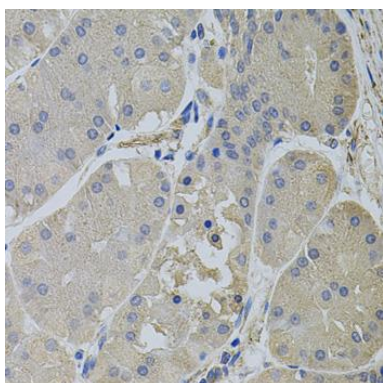
Store at -20°C. Avoid freeze / thaw cycles. Buffer: PBS with 0.02% sodium azide, 50% glycerol, pH7.3.

## Product Images

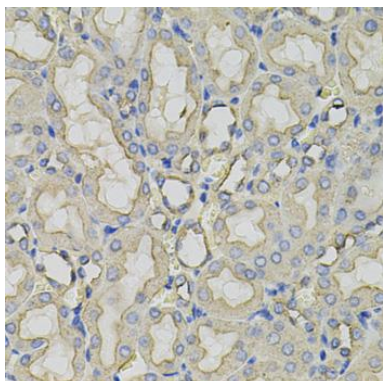
---



Western blot analysis of extracts of various cell lines, using CLTC antibody (CAB7886) at 1:500 dilution. Secondary antibody: HRP Goat Anti-Rabbit IgG (H+L) (CABS014) at 1:10000 dilution. Lysates/proteins: 25ug per lane. Blocking buffer: 3% nonfat dry milk in TBST. Detection: ECL Basic Kit (CABM00020). Exposure time: 90s.



Immunohistochemistry of paraffin-embedded human stomach using CLTC antibody (CAB7886) (40x lens).



Immunohistochemistry of paraffin-embedded rat kidney using CLTC antibody (CAB7886) (40x lens).