

EEF1G Rabbit Polyclonal Antibody



CAB7891

Product Information

Size:

20uL, 50uL, 100uL, 200uL

Observed MW:

50kDa

Calculated MW:

50kDa/56kDa

Applications:

WB IHC IF

Reactivity:

Human, Mouse, Rat

Protein Background

This gene encodes a subunit of the elongation factor-1 complex, which is responsible for the enzymatic delivery of aminoacyl tRNAs to the ribosome. This subunit contains an N-terminal glutathione transferase domain, which may be involved in regulating the assembly of multisubunit complexes containing this elongation factor and aminoacyl-tRNA synthetases.

Immunogen information

Gene ID:

1937

Uniprot

P26641

Synonyms:

EEF1G; EF1G; GIG35

Antibody Information

Recommended dilutions:

WB 1:500 - 1:2000 IHC 1:50
- 1:100 IF 1:50 - 1:100

Source:

Rabbit

Isotype:

IgG

Purification:

Affinity purification

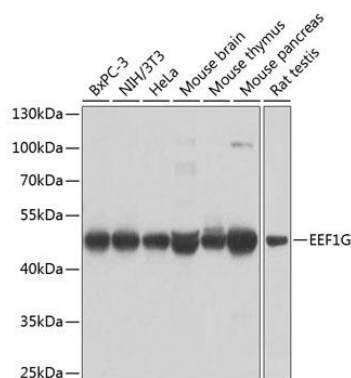
Immunogen:

Recombinant fusion protein containing a sequence corresponding to amino acids 168-437 of human EEF1G (NP_001395.1).

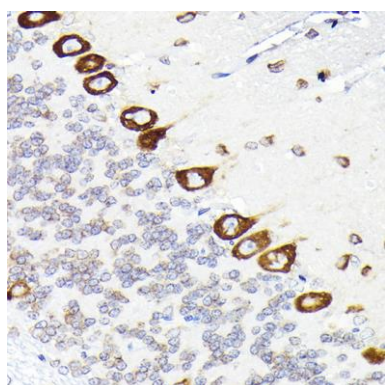
Storage:

Store at -20°C. Avoid freeze / thaw cycles. Buffer: PBS with 0.02% sodium azide, 50% glycerol, pH7.3.

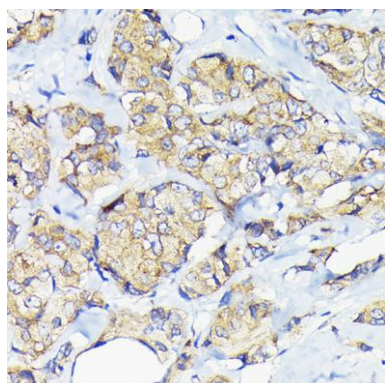
Product Images



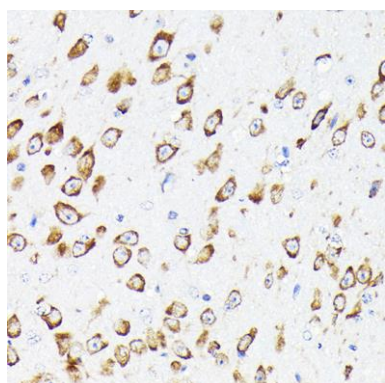
Western blot analysis of extracts of various cell lines, using EEF1G antibody (CAB7891) at 1:1000 dilution. Secondary antibody: HRP Goat Anti-Rabbit IgG (H+L) (CABS014) at 1:10000 dilution. Lysates/proteins: 25ug per lane. Blocking buffer: 3% nonfat dry milk in TBST. Detection: ECL Basic Kit (CABM00020). Exposure time: 5s.



Immunohistochemistry of paraffin-embedded rat brain using EEF1G Rabbit pAb (CAB7891) at dilution of 1:50 (40x lens).



Immunohistochemistry of paraffin-embedded human breast cancer using EEF1G Rabbit pAb (CAB7891) at dilution of 1:50 (40x lens).



Immunohistochemistry of paraffin-embedded mouse brain using EEF1G Rabbit pAb (CAB7891) at dilution of 1:50 (40x lens).