

# FGF13 Rabbit Polyclonal Antibody



CAB7895

## Product Information

### Size:

20uL, 50uL, 100uL, 200uL

### Observed MW:

28kDa

### Calculated MW:

21kDa/22kDa/25kDa/27kDa/  
28kDa

### Applications:

WB IHC

### Reactivity:

Human, Mouse, Rat

## Antibody Information

### Recommended dilutions:

WB 1:500 - 1:2000 IHC 1:50  
- 1:200

### Source:

Rabbit

### Isotype:

IgG

### Purification:

Affinity purification

## Protein Background

The protein encoded by this gene is a member of the fibroblast growth factor (FGF) family. FGF family members possess broad mitogenic and cell survival activities, and are involved in a variety of biological processes, including embryonic development, cell growth, morphogenesis, tissue repair, tumor growth, and invasion. This gene is located in a region on chromosome X, which is associated with Borjeson-Forssman-Lehmann syndrome (BFLS), making it a possible candidate gene for familial cases of the BFLS, and for other syndromal and nonspecific forms of X-linked mental retardation mapping to this region. Alternative splicing of this gene at the 5' end results in several transcript variants encoding different isoforms with different N-termini.

## Immunogen information

### Gene ID:

2258

### Uniprot

Q92913

### Synonyms:

FGF13; FGF-13; FGF2; FHF-2; FHF2

### Immunogen:

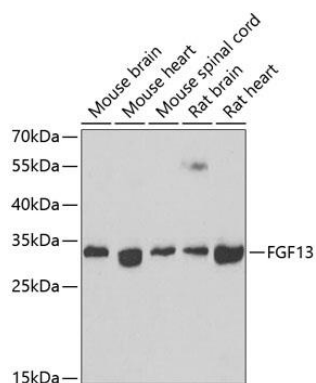
Recombinant fusion protein containing a sequence corresponding to amino acids 1-245 of human FGF13 (NP\_004105.1).

### Storage:

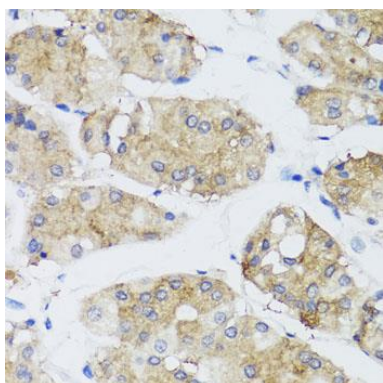
Store at -20°C. Avoid freeze / thaw cycles. Buffer: PBS with 0.02% sodium azide, 50% glycerol, pH7.3.

## Product Images

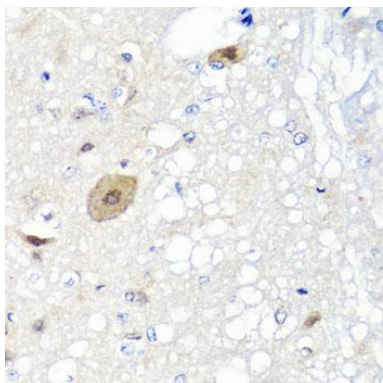
---



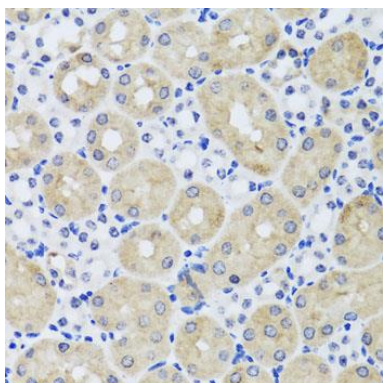
Western blot analysis of extracts of various cell lines, using FGF13 antibody (CAB7895) at 1:1000 dilution. Secondary antibody: HRP Goat Anti-Rabbit IgG (H+L) (CABS014) at 1:10000 dilution. Lysates/proteins: 25ug per lane. Blocking buffer: 3% nonfat dry milk in TBST. Detection: ECL Basic Kit (CABM00020). Exposure time: 90s.



Immunohistochemistry of paraffin-embedded human stomach using FGF13 antibody (CAB7895) at dilution of 1:100 (40x lens).



Immunohistochemistry of paraffin-embedded rat brain using FGF13 antibody (CAB7895) at dilution of 1:100 (40x lens).



Immunohistochemistry of paraffin-embedded mouse kidney using FGF13 antibody (CAB7895) at dilution of 1:100 (40x lens).