

GTF2I Rabbit Polyclonal Antibody



CAB7898

Product Information

Size:

20uL, 50uL, 100uL, 200uL

Observed MW:

132kDa

Calculated MW:

30kDa/107kDa/110kDa/112kDa

Applications:

WB IHC IF

Reactivity:

Human, Mouse, Rat

Antibody Information

Recommended dilutions:

WB 1:500 - 1:2000 IHC
1:100 - 1:200 IF 1:50 -
1:200

Source:

Rabbit

Isotype:

IgG

Purification:

Affinity purification

Protein Background

This gene encodes a phosphoprotein containing six characteristic repeat motifs. The encoded protein binds to the initiator element (Inr) and E-box element in promoters and functions as a regulator of transcription. This locus, along with several other neighboring genes, is deleted in Williams-Beuren syndrome. There are many closely related genes and pseudogenes for this gene on chromosome 7. This gene also has pseudogenes on chromosomes 9, 13, and 21. Alternatively spliced transcript variants encoding multiple isoforms have been observed.

Immunogen information

Gene ID:

2969

Uniprot

P78347

Synonyms:

GTF2I; BAP135; BTKAP1; DIWS; GTFII-I; IB291; SPIN; TFII-I; WBS; WBSCR6

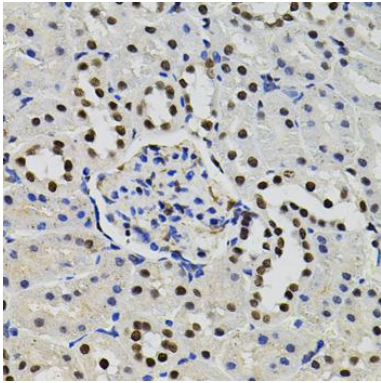
Immunogen:

A synthetic peptide of human GTF2I

Storage:

Store at -20°C. Avoid freeze / thaw cycles. Buffer: PBS with 0.02% sodium azide, 50% glycerol, pH7.3.

Product Images



Immunohistochemistry of paraffin-embedded rat kidney using GTF21 antibody (CAB7898) (40x lens).