

# KIF11 Rabbit Polyclonal Antibody



CAB7907

---

## Product Information

### Size:

20uL, 50uL, 100uL, 200uL

### Observed MW:

130kDa

### Calculated MW:

119kDa

### Applications:

WB IF IP

### Reactivity:

Human

## Protein Background

This gene encodes a motor protein that belongs to the kinesin-like protein family. Members of this protein family are known to be involved in various kinds of spindle dynamics. The function of this gene product includes chromosome positioning, centrosome separation and establishing a bipolar spindle during cell mitosis.

## Immunogen information

### Gene ID:

3832

### Uniprot

P52732

### Synonyms:

KIF11; EG5; HKSP; KNSL1; MCLMR; TRIP5

## Antibody Information

### Recommended dilutions:

WB 1:500 - 1:2000 IF 1:50 -  
1:100 IP 1:50 - 1:200

### Source:

Rabbit

### Isotype:

IgG

### Purification:

Affinity purification

### Immunogen:

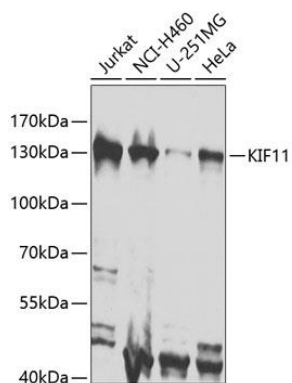
Recombinant fusion protein containing a sequence corresponding to amino acids 797-1056 of human KIF11 (NP\_004514.2).

### Storage:

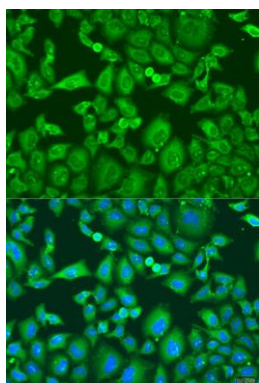
Store at -20°C. Avoid freeze / thaw cycles. Buffer: PBS with 0.02% sodium azide, 50% glycerol, pH7.3.

## Product Images

---



Western blot analysis of extracts of various cell lines, using KIF11 antibody (CAB7907) at 1:1000 dilution. Secondary antibody: HRP Goat Anti-Rabbit IgG (H+L) (CABS014) at 1:10000 dilution. Lysates/proteins: 25ug per lane. Blocking buffer: 3% nonfat dry milk in TBST. Detection: ECL Basic Kit (CABM00020). Exposure time: 30s.



Immunofluorescence analysis of U2OS cells using KIF11 antibody (CAB7907) at dilution of 1:100. Blue: DAPI for nuclear staining.