

# KRT10 Rabbit Polyclonal Antibody



CAB7908

---

## Product Information

### Size:

20uL, 50uL, 100uL, 200uL

### Observed MW:

59kDa

### Calculated MW:

58kDa

### Applications:

WB

### Reactivity:

Human

## Protein Background

This gene encodes a member of the type I (acidic) cytokeratin family, which belongs to the superfamily of intermediate filament (IF) proteins. Keratins are heteropolymeric structural proteins which form the intermediate filament. These filaments, along with actin microfilaments and microtubules, compose the cytoskeleton of epithelial cells. Mutations in this gene are associated with epidermolytic hyperkeratosis. This gene is located within a cluster of keratin family members on chromosome 17q21.

## Immunogen information

### Gene ID:

3858

### Uniprot

P13645

### Synonyms:

KRT10; BCIE; BIE; CK10; EHK; K10; KPP

## Antibody Information

### Recommended dilutions:

WB 1:500 - 1:2000

### Source:

Rabbit

### Isotype:

IgG

### Purification:

Affinity purification

### Immunogen:

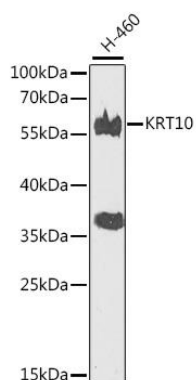
A synthetic peptide of human KRT10

### Storage:

Store at -20°C. Avoid freeze / thaw cycles. Buffer: PBS with 0.02% sodium azide, 50% glycerol, pH7.3.

## Product Images

---



Western blot analysis of extracts of H-460 cells, using KRT10 antibody (CAB7908) at 1:500 dilution. Secondary antibody: HRP Goat Anti-Rabbit IgG (H+L) (CABS014) at 1:10000 dilution. Lysates/proteins: 25ug per lane. Blocking buffer: 3% nonfat dry milk in TBST. Detection: ECL Basic Kit (CABM00020). Exposure time: 90s.