

LIM2 Rabbit Polyclonal Antibody



CAB7909

Product Information

Size:

20uL, 50uL, 100uL, 200uL

Observed MW:

20kDa

Calculated MW:

19kDa/24kDa

Applications:

WB

Reactivity:

Human, Mouse, Rat

Protein Background

This gene encodes an eye lens-specific protein found at the junctions of lens fiber cells, where it may contribute to cell junctional organization. It acts as a receptor for calmodulin, and may play an important role in both lens development and cataractogenesis. Mutations in this gene have been associated with cataract formation. Alternatively spliced transcript variants encoding different isoforms have been found for this gene.

Immunogen information

Gene ID:

3982

Uniprot

P55344

Synonyms:

LIM2; CTRCT19; MP17; MP19

Antibody Information

Recommended dilutions:

WB 1:500 - 1:2000

Source:

Rabbit

Isotype:

IgG

Purification:

Affinity purification

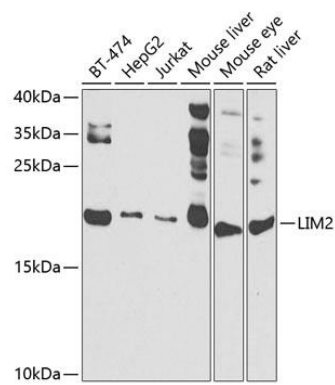
Immunogen:

Recombinant fusion protein containing a sequence corresponding to amino acids 25-110 of human LIM2 (NP_085915.2).

Storage:

Store at -20°C. Avoid freeze / thaw cycles. Buffer: PBS with 0.02% sodium azide, 50% glycerol, pH7.3.

Product Images



Western blot analysis of extracts of various cell lines, using LIM2 antibody (CAB7909) at 1:1000 dilution. Secondary antibody: HRP Goat Anti-Rabbit IgG (H+L) (CABS014) at 1:10000 dilution. Lysates/proteins: 25ug per lane. Blocking buffer: 3% nonfat dry milk in TBST. Detection: ECL Basic Kit (CABM00020). Exposure time: 90s.