

CAPRIN1 Rabbit Polyclonal Antibody



CAB7910

Product Information

Size:

20uL, 50uL, 100uL, 200uL

Observed MW:

120kDa

Calculated MW:

76kDa/78kDa

Applications:

WB IHC IF

Reactivity:

Human, Mouse, Rat

Antibody Information

Recommended dilutions:

WB 1:500 - 1:2000 IHC

1:100 - 1:200 IF 1:50 -

1:200

Source:

Rabbit

Isotype:

IgG

Purification:

Affinity purification

Protein Background

CAPRIN1(Caprin-1) is a cytoplasmic phosphoprotein which may regulate the transport and translation of mRNAs of proteins involved in synaptic plasticity in neurons and cell proliferation and migration in multiple cell types. Its levels, except in the brain, are tightly correlated with cellular proliferation. Suppression of expression of human Caprin-1 resulted in slowing of the proliferation rate, which suggests its essential for normal cellular proliferation.

Immunogen information

Gene ID:

4076

Uniprot

Q14444

Synonyms:

CAPRIN1; GPIAP1; GPIP137; GRIP137; M11S1; RNG105; p137GPI; caprin-1

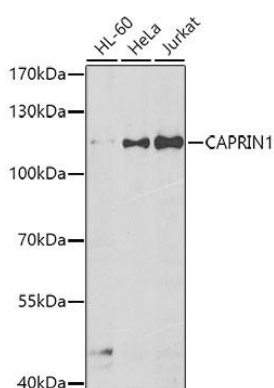
Immunogen:

Recombinant protein of human CAPRIN1

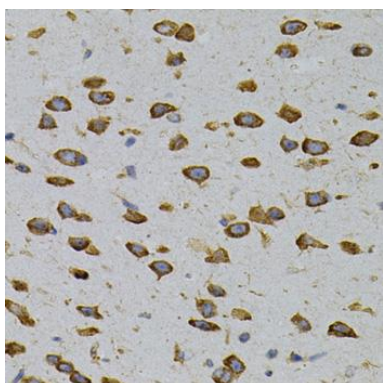
Storage:

Store at -20°C. Avoid freeze / thaw cycles. Buffer: PBS with 0.02% sodium azide, 50% glycerol, pH7.3.

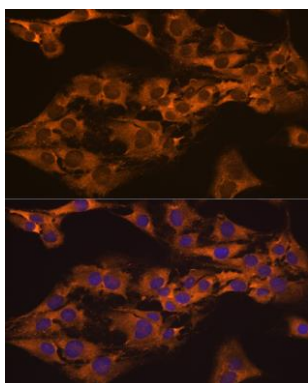
Product Images



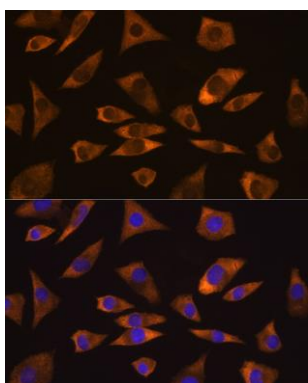
Western blot analysis of extracts of various cell lines, using CAPRIN1 antibody (CAB7910) at 1:500 dilution. Secondary antibody: HRP Goat Anti-Rabbit IgG (H+L) (CABS014) at 1:10000 dilution. Lysates/proteins: 25ug per lane. Blocking buffer: 3% nonfat dry milk in TBST. Detection: ECL Basic Kit (CABM00020). Exposure time: 90s.



Immunohistochemistry of paraffin-embedded mouse brain using CAPRIN1 antibody (CAB7910) (40x lens).



Immunofluorescence analysis of C6 cells using CAPRIN1 Rabbit pAb (CAB7910) at dilution of 1:100 (40x lens). Blue: DAPI for nuclear staining.



Immunofluorescence analysis of L929 cells using CAPRIN1 Rabbit pAb (CAB7910) at dilution of 1:100 (40x lens). Blue: DAPI for nuclear staining.