

MTX1 Rabbit Polyclonal Antibody



CAB7912

Product Information

Size:

20uL, 50uL, 100uL, 200uL

Observed MW:

35kDa

Calculated MW:

35kDa/48kDa/51kDa

Applications:

WB IHC IF

Reactivity:

Human, Mouse, Rat

Antibody Information

Recommended dilutions:

WB 1:500 - 1:2000 IHC 1:50
- 1:200 IF 1:50 - 1:200

Source:

Rabbit

Isotype:

IgG

Purification:

Affinity purification

Protein Background

Immunogen information

Gene ID:

4580

Uniprot

Q13505

Synonyms:

MTX1; MTX; MTXN; metaxin-1

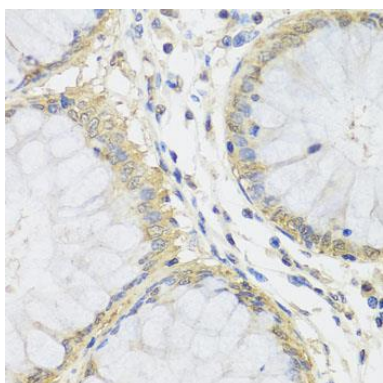
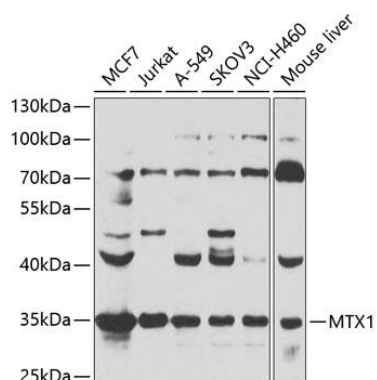
Immunogen:

Recombinant fusion protein containing a sequence corresponding to amino acids 186-435 of human MTX1 (NP_942584.2).

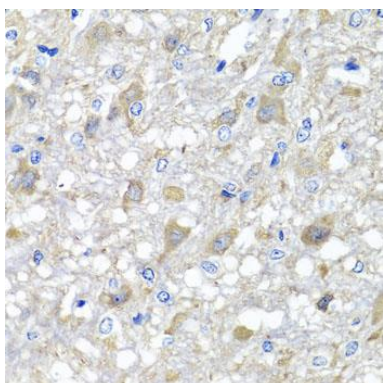
Storage:

Store at -20°C. Avoid freeze / thaw cycles. Buffer: PBS with 0.02% sodium azide, 50% glycerol, pH7.3.

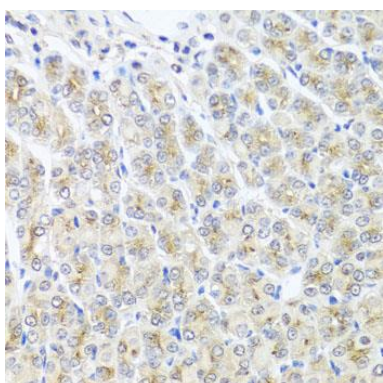
Product Images



Immunohistochemistry of paraffin-embedded human colon using MTX1 antibody (CAB7912) at dilution of 1:100 (40x lens).



Immunohistochemistry of paraffin-embedded rat brain using MTX1 antibody (CAB7912) at dilution of 1:100 (40x lens).



Immunohistochemistry of paraffin-embedded mouse stomach using MTX1 antibody (CAB7912) at dilution of 1:100 (40x lens).