

ADAM12 Rabbit Polyclonal Antibody



CAB7940

Product Information

Size:

20uL, 50uL, 100uL, 200uL

Observed MW:

100kDa

Calculated MW:

80kDa/99kDa

Applications:

WB IHC IF

Reactivity:

Human, Mouse, Rat

Antibody Information

Recommended dilutions:

WB 1:500 - 1:2000 IHC

1:100 - 1:200 IF 1:50 -

1:200

Source:

Rabbit

Isotype:

IgG

Purification:

Affinity purification

Protein Background

This gene encodes a member of a family of proteins that are structurally related to snake venom disintegrins and have been implicated in a variety of biological processes involving cell-cell and cell-matrix interactions, including fertilization, muscle development, and neurogenesis. Expression of this gene has been used as a maternal serum marker for pre-natal development. Alternative splicing results in multiple transcript variants encoding different isoforms. Shorter isoforms are secreted, while longer isoforms are membrane-bound form.

Immunogen information

Gene ID:

8038

Uniprot

O43184

Synonyms:

ADAM12; ADAM12-OT1; CAR10; MCMP; MCMPMLtna; MLTN; MLTNA

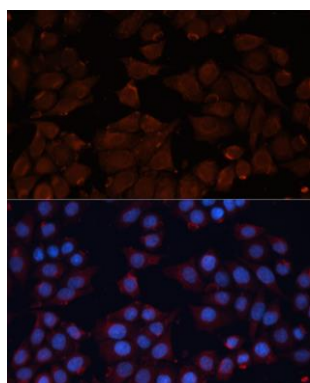
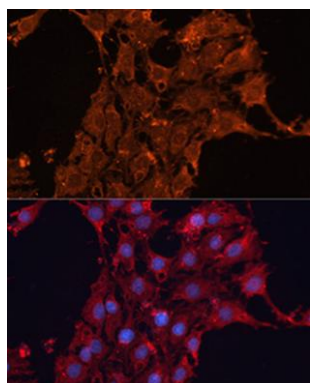
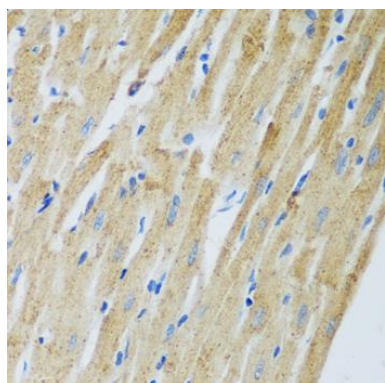
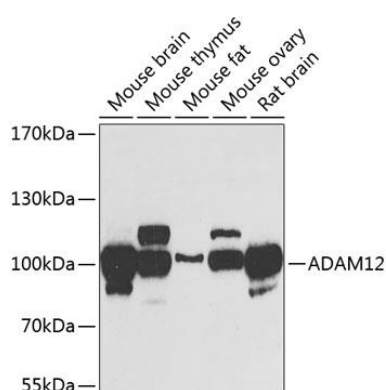
Immunogen:

Recombinant fusion protein containing a sequence corresponding to amino acids 589-738 of human ADAM12 (NP_067673.2).

Storage:

Store at -20°C. Avoid freeze / thaw cycles. Buffer: PBS with 0.02% sodium azide, 50% glycerol, pH7.3.

Product Images



Western blot analysis of extracts of various cell lines, using ADAM12 antibody (CAB7940) at 1:1000 dilution. Secondary antibody: HRP Goat Anti-Rabbit IgG (H+L) (CABS014) at 1:10000 dilution. Lysates/proteins: 25ug per lane. Blocking buffer: 3% nonfat dry milk in TBST. Detection: ECL Basic Kit (CABM00020). Exposure time: 90s.

Immunohistochemistry of paraffin-embedded rat heart using ADAM12 antibody (CAB7940) at dilution of 1:100 (40x lens).

Immunofluorescence analysis of C6 cells using ADAM12 antibody (CAB7940) at dilution of 1:100. Blue: DAPI for nuclear staining.

Immunofluorescence analysis of HeLa cells using ADAM12 antibody (CAB7940) at dilution of 1:100. Blue: DAPI for nuclear staining.