

APOL1 Rabbit Polyclonal Antibody



CAB7943

Product Information

Size:

20uL, 50uL, 100uL, 200uL

Observed MW:

38kDa

Calculated MW:

42kDa/43kDa/45kDa

Applications:

WB IHC

Reactivity:

Human, Rat

Protein Background

This gene encodes a secreted high density lipoprotein which binds to apolipoprotein A-I. Apolipoprotein A-I is a relatively abundant plasma protein and is the major apoprotein of HDL. It is involved in the formation of most cholesteryl esters in plasma and also promotes efflux of cholesterol from cells. This apolipoprotein L family member may play a role in lipid exchange and transport throughout the body, as well as in reverse cholesterol transport from peripheral cells to the liver. Several different transcript variants encoding different isoforms have been found for this gene.

Immunogen information

Gene ID:

8542

Uniprot

O14791

Synonyms:

APOL1; APO-L; APOL; APOL-I; FSGS4

Antibody Information

Recommended dilutions:

WB 1:500 - 1:2000 IHC 1:50
- 1:100

Source:

Rabbit

Isotype:

IgG

Purification:

Affinity purification

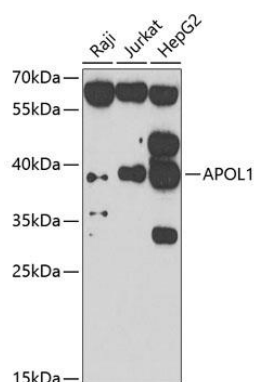
Immunogen:

Recombinant fusion protein containing a sequence corresponding to amino acids 179-398 of human APOL1 (NP_003652.2).

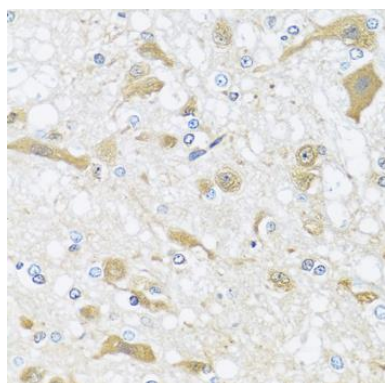
Storage:

Store at -20°C. Avoid freeze / thaw cycles. Buffer: PBS with 0.02% sodium azide, 50% glycerol, pH7.3.

Product Images



Western blot analysis of extracts of various cell lines, using APOL1 antibody (CAB7943) at 1:1000 dilution. Secondary antibody: HRP Goat Anti-Rabbit IgG (H+L) (CABS014) at 1:10000 dilution. Lysates/proteins: 25ug per lane. Blocking buffer: 3% nonfat dry milk in TBST. Detection: ECL Enhanced Kit (CABM00021). Exposure time: 90s.



Immunohistochemistry of paraffin-embedded rat brain using APOL1 antibody (CAB7943) at dilution of 1:100 (40x lens).