

KDM4A Rabbit Polyclonal Antibody



CAB7953

Product Information

Size:

20uL, 50uL, 100uL, 200uL

Observed MW:

150kDa

Calculated MW:

54kDa/120kDa

Applications:

WB IHC IP

Reactivity:

Human, Mouse

Protein Background

This gene is a member of the Jumonji domain 2 (JMJD2) family and encodes a protein containing a JmjN domain, a JmjC domain, a JD2H domain, two TUDOR domains, and two PHD-type zinc fingers. This nuclear protein functions as a trimethylation-specific demethylase, converting specific trimethylated histone residues to the dimethylated form, and as a transcriptional repressor.

Immunogen information

Gene ID:

9682

Uniprot

O75164

Synonyms:

KDM4A; JHDM3A; JMJD2; JMJD2A; TDRD14A

Antibody Information

Recommended dilutions:

WB 1:500 - 1:2000 IHC 1:50
- 1:200 IP 1:50 - 1:100

Source:

Rabbit

Isotype:

IgG

Purification:

Affinity purification

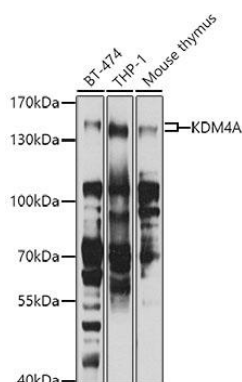
Immunogen:

Recombinant fusion protein containing a sequence corresponding to amino acids 585-815 of human KDM4A (NP_055478.2).

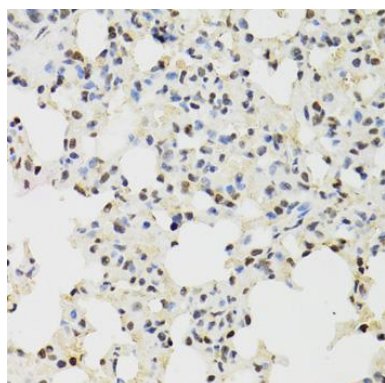
Storage:

Store at -20°C. Avoid freeze / thaw cycles. Buffer: PBS with 0.02% sodium azide, 50% glycerol, pH7.3.

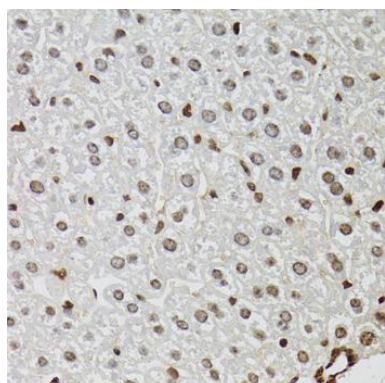
Product Images



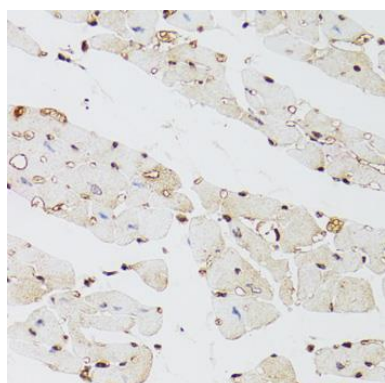
Western blot analysis of extracts of various cell lines, using KDM4A antibody (CAB7953) at 1:1000 dilution. Secondary antibody: HRP Goat Anti-Rabbit IgG (H+L) (CABS014) at 1:10000 dilution. Lysates/proteins: 25ug per lane. Blocking buffer: 3% nonfat dry milk in TBST. Detection: ECL Basic Kit (CABM00020). Exposure time: 90s.



Immunohistochemistry of paraffin-embedded mouse lung using KDM4A antibody (CAB7953) at dilution of 1:100 (40x lens).



Immunohistochemistry of paraffin-embedded mouse liver using KDM4A antibody (CAB7953) at dilution of 1:100 (40x lens).



Immunohistochemistry of paraffin-embedded mouse heart using KDM4A antibody (CAB7953) at dilution of 1:100 (40x lens).