

DDX39A Rabbit Polyclonal Antibody



CAB7955

Product Information

Size:

20uL, 50uL, 100uL, 200uL

Observed MW:

49kDa

Calculated MW:

30kDa/36kDa/49kDa

Applications:

WB IHC

Reactivity:

Human, Mouse, Rat

Antibody Information

Recommended dilutions:

WB 1:500 - 1:2000 IHC 1:50
- 1:200

Source:

Rabbit

Isotype:

IgG

Purification:

Affinity purification

Protein Background

This gene encodes a member of the DEAD box protein family. These proteins are characterized by the conserved motif Asp-Glu-Ala-Asp (DEAD) and are putative RNA helicases. They are implicated in a number of cellular processes involving alteration of RNA secondary structure, such as translation initiation, nuclear and mitochondrial splicing, and ribosome and spliceosome assembly. Based on their distribution patterns, some members of the DEAD box protein family are believed to be involved in embryogenesis, spermatogenesis, and cellular growth and division. This gene is thought to play a role in the prognosis of patients with gastrointestinal stromal tumors. A pseudogene of this gene is present on chromosome 13. Alternate splicing results in multiple transcript variants. Additional alternatively spliced transcript variants of this gene have been described, but their full-length nature is not known.

Immunogen information

Gene ID:

10212

Uniprot

O00148

Synonyms:

DDX39A; BAT1; BAT1L; DDX39; DDXL; URH49

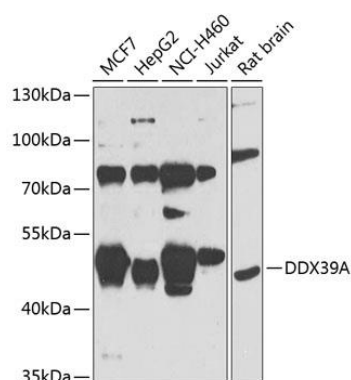
Immunogen:

Recombinant fusion protein containing a sequence corresponding to amino acids 178-427 of human DDX39A (NP_005795.2).

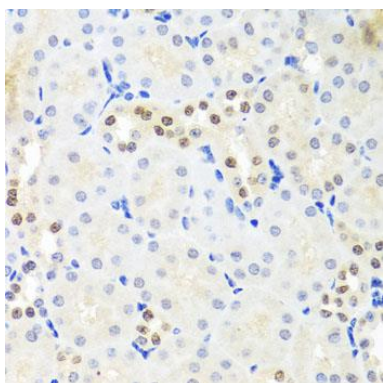
Storage:

Store at -20°C. Avoid freeze / thaw cycles. Buffer: PBS with 0.02% sodium azide, 50% glycerol, pH7.3.

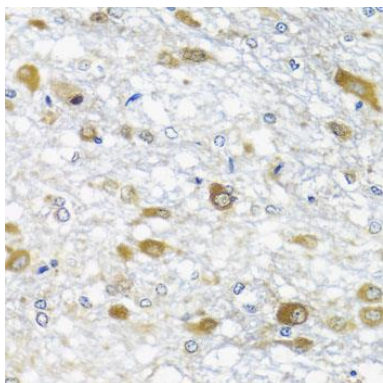
Product Images



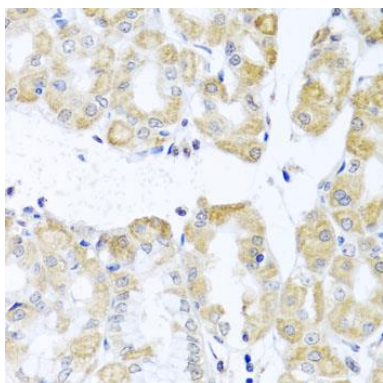
Western blot analysis of extracts of various cell lines, using DDX39A antibody (CAB7955) at 1:1000 dilution. Secondary antibody: HRP Goat Anti-Rabbit IgG (H+L) (CABS014) at 1:10000 dilution. Lysates/proteins: 25ug per lane. Blocking buffer: 3% nonfat dry milk in TBST. Detection: ECL Enhanced Kit (CABM00021). Exposure time: 30s.



Immunohistochemistry of paraffin-embedded mouse kidney using DDX39A antibody (CAB7955) at dilution of 1:100 (40x lens).



Immunohistochemistry of paraffin-embedded rat brain using DDX39A antibody (CAB7955) at dilution of 1:100 (40x lens).



Immunohistochemistry of paraffin-embedded human stomach using DDX39A antibody (CAB7955) at dilution of 1:100 (40x lens).