

# ARHGEF9 Rabbit Polyclonal Antibody



CAB7964

## Product Information

### Size:

20uL, 50uL, 100uL, 200uL

### Observed MW:

61kDa

### Calculated MW:

49kDa/54kDa/60kDa

### Applications:

WB IHC IF

### Reactivity:

Human, Mouse, Rat

## Protein Background

The protein encoded by this gene is a Rho-like GTPase that switches between the active (GTP-bound) state and inactive (GDP-bound) state to regulate CDC42 and other genes. Defects in this gene are a cause of startle disease with epilepsy (STHEE), also known as hyperekplexia with epilepsy. Three transcript variants encoding different isoforms have been found for this gene.

## Immunogen information

### Gene ID:

23229

### Uniprot

O43307

### Synonyms:

ARHGEF9; COLLYBISTIN; EIEE8; HPEM-2; PEM-2; PEM2

## Antibody Information

### Recommended dilutions:

WB 1:500 - 1:2000 IHC 1:50  
- 1:200 IF 1:50 - 1:100

### Source:

Rabbit

### Isotype:

IgG

### Purification:

Affinity purification

### Immunogen:

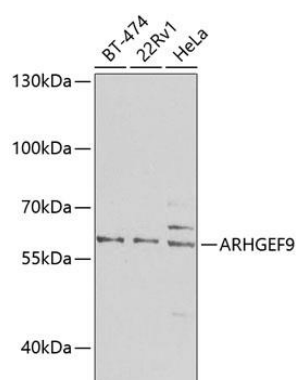
Recombinant fusion protein containing a sequence corresponding to amino acids 307-516 of human ARHGEF9 (NP\_056000.1).

### Storage:

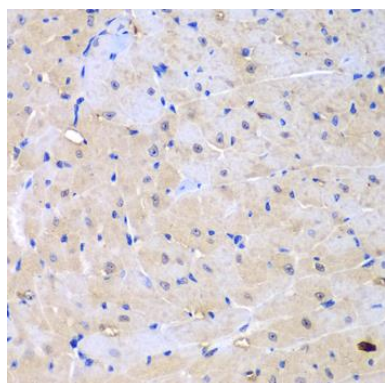
Store at -20°C. Avoid freeze / thaw cycles. Buffer: PBS with 0.02% sodium azide, 50% glycerol, pH7.3.

## Product Images

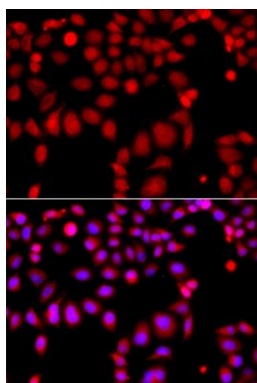
---



Western blot analysis of extracts of various cell lines, using ARHGEF9 antibody (CAB7964) at 1:1000 dilution. Secondary antibody: HRP Goat Anti-Rabbit IgG (H+L) (CABS014) at 1:10000 dilution. Lysates/proteins: 25ug per lane. Blocking buffer: 3% nonfat dry milk in TBST. Detection: ECL Basic Kit (CABM00020). Exposure time: 90s.



Immunohistochemistry of paraffin-embedded mouse heart using ARHGEF9 antibody (CAB7964) at dilution of 1:100 (40x lens).



Immunofluorescence analysis of A549 cells using ARHGEF9 antibody (CAB7964). Blue: DAPI for nuclear staining.