

MTHFD1L Rabbit Polyclonal Antibody



CAB7969

Product Information

Size:

20uL, 50uL, 100uL, 200uL

Observed MW:

106kDa

Calculated MW:

29kDa/105kDa

Applications:

WB IHC IF

Reactivity:

Human, Mouse, Rat

Protein Background

The protein encoded by this gene is involved in the synthesis of tetrahydrofolate (THF) in the mitochondrion. THF is important in the de novo synthesis of purines and thymidylate and in the regeneration of methionine from homocysteine. Several transcript variants encoding different isoforms have been found for this gene.

Immunogen information

Gene ID:

25902

Uniprot

Q6UB35

Synonyms:

MTHFD1L; FTHFSDC1; MTC1THFS; dJ292B18.2

Antibody Information

Recommended dilutions:

WB 1:500 - 1:2000 IHC 1:50
- 1:200 IF 1:50 - 1:100

Source:

Rabbit

Isotype:

IgG

Purification:

Affinity purification

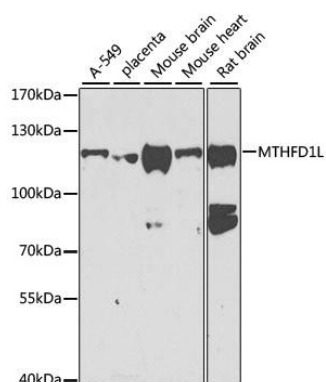
Immunogen:

Recombinant fusion protein containing a sequence corresponding to amino acids 759-978 of human MTHFD1L (NP_056255.2).

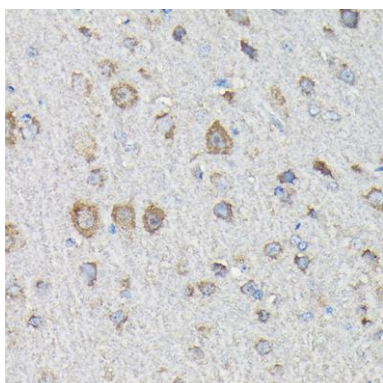
Storage:

Store at -20°C. Avoid freeze / thaw cycles. Buffer: PBS with 0.02% sodium azide, 50% glycerol, pH7.3.

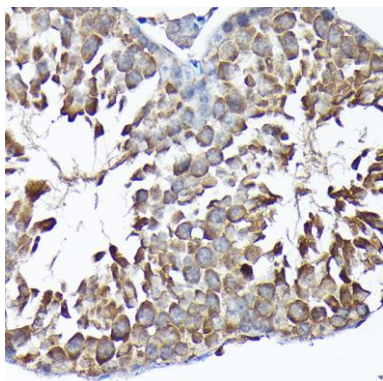
Product Images



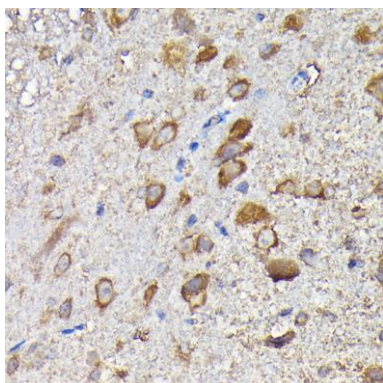
Western blot analysis of extracts of various cell lines, using MTHFD1L antibody (CAB7969) at 1:1000 dilution. Secondary antibody: HRP Goat Anti-Rabbit IgG (H+L) (CABS014) at 1:10000 dilution. Lysates/proteins: 25ug per lane. Blocking buffer: 3% nonfat dry milk in TBST. Detection: ECL Basic Kit (CABM00020). Exposure time: 90s.



Immunohistochemistry of paraffin-embedded rat brain using MTHFD1L Rabbit pAb (CAB7969) at dilution of 1:200 (40x lens).



Immunohistochemistry of paraffin-embedded mouse testis using MTHFD1L Rabbit pAb (CAB7969) at dilution of 1:200 (40x lens).



Immunohistochemistry of paraffin-embedded mouse spinal cord using MTHFD1L Rabbit pAb (CAB7969) at dilution of 1:200 (40x lens).