

# CHIC2 Rabbit Polyclonal Antibody



CAB7971

## Product Information

### Size:

20uL, 50uL, 100uL, 200uL

### Observed MW:

19kDa

### Calculated MW:

19kDa

### Applications:

WB IHC

### Reactivity:

Human, Mouse, Rat

## Protein Background

This gene encodes a member of the CHIC family of proteins. The encoded protein contains a cysteine-rich hydrophobic (CHIC) motif, and is localized to vesicular structures and the plasma membrane. This gene is associated with some cases of acute myeloid leukemia.

## Immunogen information

### Gene ID:

26511

### Uniprot

Q9UKJ5

### Synonyms:

CHIC2; BTL

## Antibody Information

### Recommended dilutions:

WB 1:500 - 1:2000 IHC 1:50  
- 1:100

### Source:

Rabbit

### Isotype:

IgG

### Purification:

Affinity purification

### Immunogen:

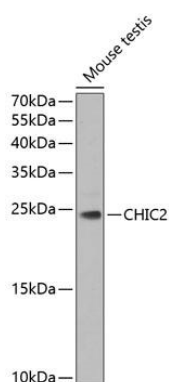
Recombinant fusion protein containing a sequence corresponding to amino acids 1-165 of human CHIC2 (NP\_036242.1).

### Storage:

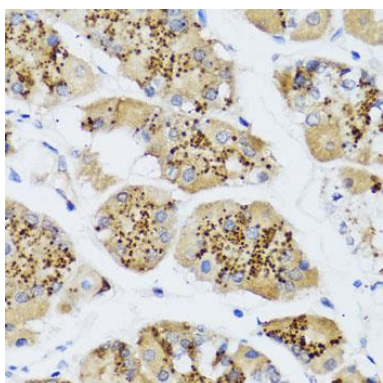
Store at -20°C. Avoid freeze / thaw cycles. Buffer: PBS with 0.02% sodium azide, 50% glycerol, pH7.3.

## Product Images

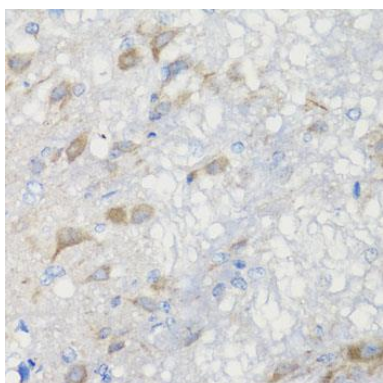
---



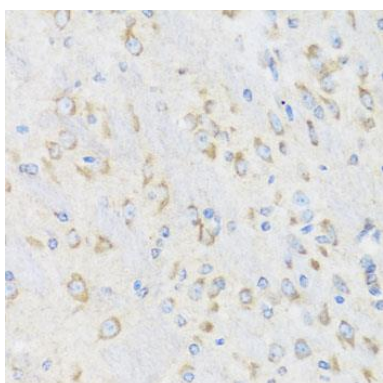
Western blot analysis of extracts of mouse testis, using CHIC2 Antibody (CAB7971) at 1:1000 dilution. Secondary antibody: HRP Goat Anti-Rabbit IgG (H+L) (CABS014) at 1:10000 dilution. Lysates/proteins: 25ug per lane. Blocking buffer: 3% nonfat dry milk in TBST. Detection: ECL Enhanced Kit (CABM00021). Exposure time: 90s.



Immunohistochemistry of paraffin-embedded human stomach using CHIC2 antibody (CAB7971) at dilution of 1:100 (40x lens).



Immunohistochemistry of paraffin-embedded rat brain using CHIC2 antibody (CAB7971) at dilution of 1:100 (40x lens).



Immunohistochemistry of paraffin-embedded mouse brain using CHIC2 antibody (CAB7971) at dilution of 1:100 (40x lens).