

B9D1 Rabbit Polyclonal Antibody



CAB7973

Product Information

Size:

20uL, 50uL, 100uL, 200uL

Observed MW:

23kDa

Calculated MW:

16kDa/22kDa

Applications:

WB IHC IF

Reactivity:

Human, Mouse, Rat

Protein Background

This gene encodes a B9 domain-containing protein, one of several that are involved in ciliogenesis. Alterations in expression of this gene have been found in a family with Meckel syndrome. Meckel syndrome has been associated with at least six different genes. This gene is located within the Smith-Magenis syndrome region on chromosome 17.

Immunogen information

Gene ID:

27077

Uniprot

Q9UPM9

Synonyms:

B9D1; B9; EPPB9; JBTS27; MKS9; MKSR1

Antibody Information

Recommended dilutions:

WB 1:500 - 1:2000 IHC 1:50
- 1:200 IF 1:50 - 1:200

Source:

Rabbit

Isotype:

IgG

Purification:

Affinity purification

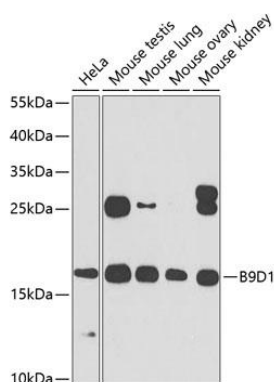
Immunogen:

Recombinant fusion protein containing a sequence corresponding to amino acids 1-130 of human B9D1 (NP_056496.1).

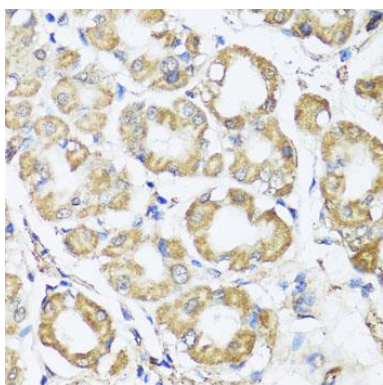
Storage:

Store at -20°C. Avoid freeze / thaw cycles. Buffer: PBS with 0.02% sodium azide, 50% glycerol, pH7.3.

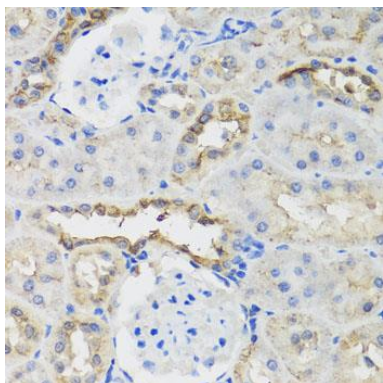
Product Images



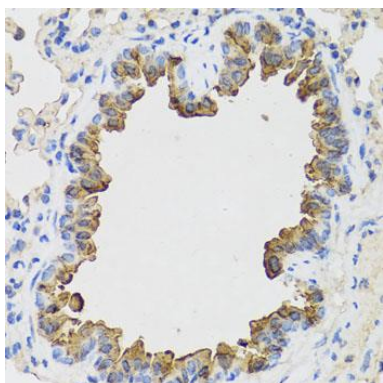
Western blot analysis of extracts of various cell lines, using B9D1 antibody (CAB7973) at 1:1000 dilution. Secondary antibody: HRP Goat Anti-Rabbit IgG (H+L) (CABS014) at 1:10000 dilution. Lysates/proteins: 25ug per lane. Blocking buffer: 3% nonfat dry milk in TBST. Detection: ECL Basic Kit (CABM00020). Exposure time: 90s.



Immunohistochemistry of paraffin-embedded human stomach using B9D1 antibody (CAB7973) at dilution of 1:100 (40x lens).



Immunohistochemistry of paraffin-embedded rat kidney using B9D1 antibody (CAB7973) at dilution of 1:100 (40x lens).



Immunohistochemistry of paraffin-embedded mouse lung using B9D1 antibody (CAB7973) at dilution of 1:100 (40x lens).