

# LSM2 Rabbit Polyclonal Antibody



CAB7988

## Product Information

### Size:

20uL, 50uL, 100uL, 200uL

### Observed MW:

13kDa

### Calculated MW:

10kDa

### Applications:

WB IHC IF

### Reactivity:

Human

## Protein Background

This gene encodes a member of the LSm family of RNA-binding proteins. LSm proteins form stable heteromers that bind specifically to the 3'-terminal oligo(U) tract of U6 snRNA and may play a role in pre-mRNA splicing by mediating U4/U6 snRNP formation. Pseudogenes of this gene are located on the short arm of chromosomes 6 and 19.

## Immunogen information

### Gene ID:

57819

### Uniprot

Q9Y333

### Synonyms:

LSM2; C6orf28; G7B; YBL026W; snRNP

## Antibody Information

### Recommended dilutions:

WB 1:500 - 1:2000 IHC 1:50  
- 1:200 IF 1:50 - 1:200

### Source:

Rabbit

### Isotype:

IgG

### Purification:

Affinity purification

### Immunogen:

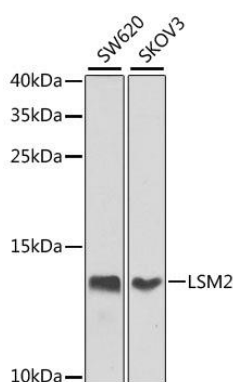
Recombinant fusion protein containing a sequence corresponding to amino acids 1-95 of human LSM2 (NP\_067000.1).

### Storage:

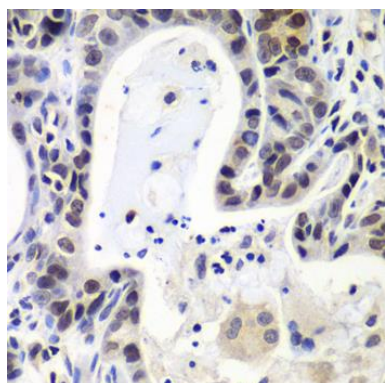
Store at -20°C. Avoid freeze / thaw cycles. Buffer: PBS with 0.02% sodium azide, 50% glycerol, pH7.3.

## Product Images

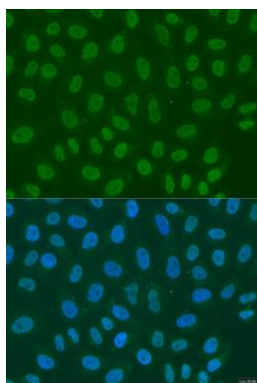
---



Western blot analysis of extracts of various cell lines, using LSM2 antibody (CAB7988) at 1:1000 dilution. Secondary antibody: HRP Goat Anti-Rabbit IgG (H+L) (CABS014) at 1:10000 dilution. Lysates/proteins: 25ug per lane. Blocking buffer: 3% nonfat dry milk in TBST. Detection: ECL Enhanced Kit (CABM00021). Exposure time: 30s.



Immunohistochemistry of paraffin-embedded human gastric cancer using LSM2 antibody (CAB7988) at dilution of 1:100 (40x lens).



Immunofluorescence analysis of U2OS cells using LSM2 antibody (CAB7988) at dilution of 1:100. Blue: DAPI for nuclear staining.