

# CYP4F12 Rabbit Polyclonal Antibody



CAB7993

## Product Information

### Size:

20uL, 50uL, 100uL, 200uL

### Observed MW:

60kDa

### Calculated MW:

11kDa/60kDa

### Applications:

WB

### Reactivity:

Human, Mouse, Rat

## Antibody Information

### Recommended dilutions:

WB 1:500 - 1:2000

### Source:

Rabbit

### Isotype:

IgG

### Purification:

Affinity purification

## Protein Background

This gene encodes a member of the cytochrome P450 superfamily of enzymes. The cytochrome P450 proteins are monooxygenases which catalyze many reactions involved in drug metabolism and synthesis of cholesterol, steroids and other lipids. This protein likely localizes to the endoplasmic reticulum. When expressed in yeast the enzyme is capable of oxidizing arachidonic acid. It can also catalyze the epoxidation of 22:6n-3 and 22:5n-3 polyunsaturated long-chain fatty acids. This gene is part of a cluster of cytochrome P450 genes on chromosome 19. Alternative splicing results in multiple transcript variants.

## Immunogen information

### Gene ID:

66002

### Uniprot

Q9HCS2

### Synonyms:

CYP4F12; CYP1V12; F22329\_1

### Immunogen:

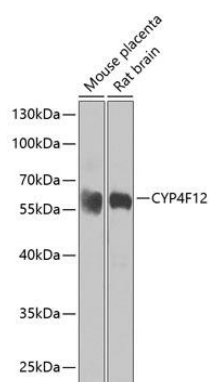
Recombinant fusion protein containing a sequence corresponding to amino acids 265-524 of human CYP4F12 (NP\_076433.3).

### Storage:

Store at -20°C. Avoid freeze / thaw cycles. Buffer: PBS with 0.02% sodium azide, 50% glycerol, pH7.3.

## Product Images

---



Western blot analysis of extracts of various cell lines, using CYP4F12 antibody (CAB7993) at 1:1000 dilution. Secondary antibody: HRP Goat Anti-Rabbit IgG (H+L) (CABS014) at 1:10000 dilution. Lysates/proteins: 25ug per lane. Blocking buffer: 3% nonfat dry milk in TBST. Detection: ECL Basic Kit (CABM00020). Exposure time: 30s.