

EFHC1 Rabbit Polyclonal Antibody



CAB8002

Product Information

Size:

20uL, 50uL, 100uL, 200uL

Observed MW:

74kDa

Calculated MW:

31kDa/72kDa/73kDa

Applications:

WB IHC

Reactivity:

Human, Mouse, Rat

Protein Background

This gene encodes an EF-hand-containing calcium binding protein. The encoded protein likely plays a role in calcium homeostasis. Mutations in this gene have been associated with susceptibility to juvenile myoclonic epilepsy and juvenile absence epilepsy. Alternatively spliced transcript variants have been described.

Immunogen information

Gene ID:

114327

Uniprot

Q5JVL4

Synonyms:

EFHC1; EJM1; dJ304B14.2

Antibody Information

Recommended dilutions:

WB 1:500 - 1:2000 IHC 1:50
- 1:200

Source:

Rabbit

Isotype:

IgG

Purification:

Affinity purification

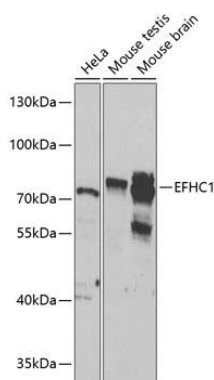
Immunogen:

Recombinant fusion protein containing a sequence corresponding to amino acids 391-640 of human EFHC1 (NP_060570.2).

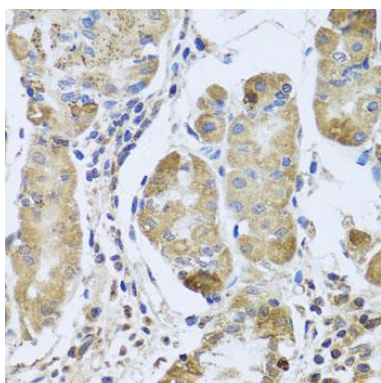
Storage:

Store at -20°C. Avoid freeze / thaw cycles. Buffer: PBS with 0.02% sodium azide, 50% glycerol, pH7.3.

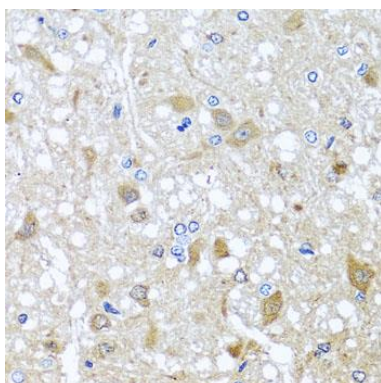
Product Images



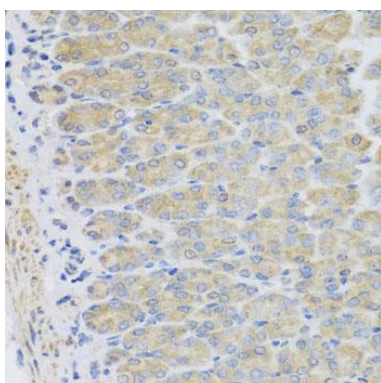
Western blot analysis of extracts of various cell lines, using EFHC1 antibody (CAB8002) at 1:1000 dilution. Secondary antibody: HRP Goat Anti-Rabbit IgG (H+L) (CABS014) at 1:10000 dilution. Lysates/proteins: 25ug per lane. Blocking buffer: 3% nonfat dry milk in TBST. Detection: ECL Basic Kit (CABM00020). Exposure time: 90s.



Immunohistochemistry of paraffin-embedded human stomach using EFHC1 antibody (CAB8002) at dilution of 1:100 (40x lens).



Immunohistochemistry of paraffin-embedded rat brain using EFHC1 antibody (CAB8002) at dilution of 1:100 (40x lens).



Immunohistochemistry of paraffin-embedded mouse stomach using EFHC1 antibody (CAB8002) at dilution of 1:100 (40x lens).