

GRID1 Rabbit Polyclonal Antibody



CAB8011

Product Information

Size:

20uL, 50uL, 100uL, 200uL

Observed MW:

100kDa

Calculated MW:

63kDa/112kDa

Applications:

WB IF

Reactivity:

Mouse, Rat

Protein Background

This gene encodes a subunit of glutamate receptor channels. These channels mediate most of the fast excitatory synaptic transmission in the central nervous system and play key roles in synaptic plasticity.

Immunogen information

Gene ID:

2894

Uniprot

Q9ULK0

Synonyms:

GRID1; GluD1; delta-1

Antibody Information

Recommended dilutions:

WB 1:500 - 1:2000 IF 1:50 - 1:200

Source:

Rabbit

Isotype:

IgG

Purification:

Affinity purification

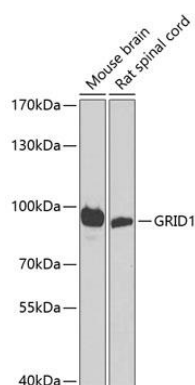
Immunogen:

Recombinant fusion protein containing a sequence corresponding to amino acids 880-1009 of human GRID1 (NP_060021.1).

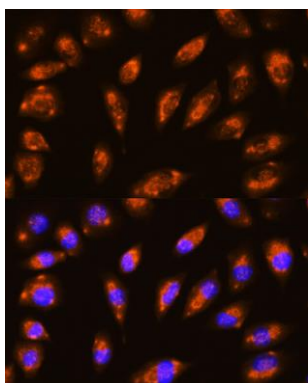
Storage:

Store at -20°C. Avoid freeze / thaw cycles. Buffer: PBS with 0.02% sodium azide, 50% glycerol, pH7.3.

Product Images



Western blot analysis of extracts of various cell lines, using GRID1 antibody (CAB8011) at 1:1000 dilution. Secondary antibody: HRP Goat Anti-Rabbit IgG (H+L) (CABS014) at 1:10000 dilution. Lysates/proteins: 25ug per lane. Blocking buffer: 3% nonfat dry milk in TBST. Detection: ECL Basic Kit (CABM00020). Exposure time: 1s.



Immunofluorescence analysis of L929 cells using GRID1 Rabbit pAb (CAB8011) at dilution of 1:100 (40x lens). Blue: DAPI for nuclear staining.