

MLF1 Rabbit Polyclonal Antibody



CAB8012

Product Information

Size:

20uL, 50uL, 100uL, 200uL

Observed MW:

35kDa

Calculated MW:

23kDa/27kDa/29kDa/30kDa/
33kDa

Applications:

WB IF

Reactivity:

Human, Mouse

Protein Background

This gene encodes an oncoprotein which is thought to play a role in the phenotypic determination of hemopoietic cells. Translocations between this gene and nucleophosmin have been associated with myelodysplastic syndrome and acute myeloid leukemia. Multiple transcript variants encoding different isoforms have been found for this gene.

Immunogen information

Gene ID:

4291

Uniprot

P58340

Synonyms:

MLF1

Antibody Information

Recommended dilutions:

WB 1:500 - 1:2000 IF 1:50 -
1:100

Source:

Rabbit

Isotype:

IgG

Purification:

Affinity purification

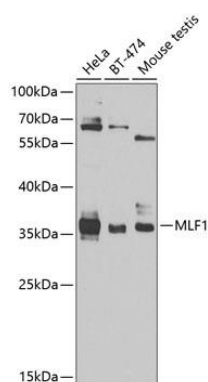
Immunogen:

Recombinant fusion protein containing a sequence corresponding to amino acids 1-268 of human MLF1 (NP_071888.1).

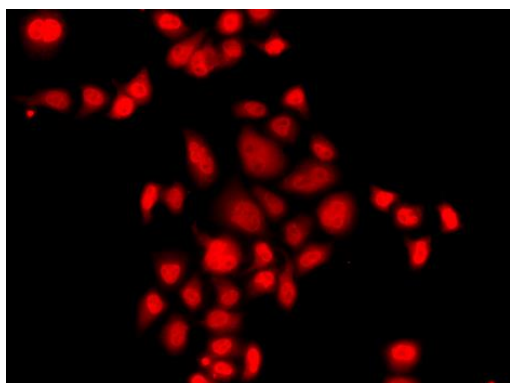
Storage:

Store at -20°C. Avoid freeze / thaw cycles. Buffer: PBS with 0.02% sodium azide, 50% glycerol, pH7.3.

Product Images



Western blot analysis of extracts of various cell lines, using MLF1 antibody (CAB8012) at 1:1000 dilution. Secondary antibody: HRP Goat Anti-Rabbit IgG (H+L) (CABS014) at 1:10000 dilution. Lysates/proteins: 25ug per lane. Blocking buffer: 3% nonfat dry milk in TBST. Detection: ECL Basic Kit (CABM00020). Exposure time: 90s.



Immunofluorescence analysis of A549 cells using MLF1 antibody (CAB8012).