

DIS3 Rabbit Polyclonal Antibody



CAB8027

Product Information

Size:

20uL, 50uL, 100uL, 200uL

Observed MW:

109kDa

Calculated MW:

105kDa/109kDa

Applications:

WB IHC

Reactivity:

Human, Mouse, Rat

Antibody Information

Recommended dilutions:

WB 1:1000 - 1:2000 IHC
1:50 - 1:200

Source:

Rabbit

Isotype:

IgG

Purification:

Affinity purification

Protein Background

Immunogen information

Gene ID:

22894

Uniprot

Q9Y2L1

Synonyms:

DIS3; 2810028N01Rik; EXOSC11; KIAA1008; RRP44; dis3p

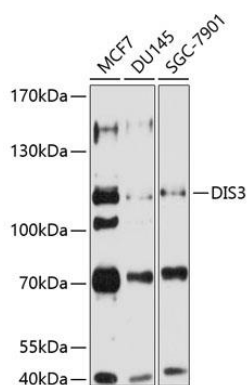
Immunogen:

Recombinant fusion protein containing a sequence corresponding to amino acids 1-280 of human DIS3 (NP_055768.3).

Storage:

Store at -20°C. Avoid freeze / thaw cycles. Buffer: PBS with 0.02% sodium azide, 50% glycerol, pH7.3.

Product Images



Western blot analysis of extracts of various cell lines, using DIS3 antibody (CAB8027) at 1:1000 dilution. Secondary antibody: HRP Goat Anti-Rabbit IgG (H+L) (CABS014) at 1:10000 dilution. Lysates/proteins: 25ug per lane. Blocking buffer: 3% nonfat dry milk in TBST. Detection: ECL Basic Kit (CABM00020). Exposure time: 5s.