

# MYLK Rabbit Polyclonal Antibody



CAB8041

## Product Information

### Size:

20uL, 50uL, 100uL, 200uL

### Observed MW:

Refer to figures

### Calculated MW:

16kDa/80kDa/110kDa/197-210kDa

### Applications:

WB IHC

### Reactivity:

Human, Mouse, Rat

## Antibody Information

### Recommended dilutions:

WB 1:500 - 1:2000 IHC 1:50 - 1:100

### Source:

Rabbit

### Isotype:

IgG

### Purification:

Affinity purification

## Protein Background

This gene, a muscle member of the immunoglobulin gene superfamily, encodes myosin light chain kinase which is a calcium/calmodulin dependent enzyme. This kinase phosphorylates myosin regulatory light chains to facilitate myosin interaction with actin filaments to produce contractile activity. This gene encodes both smooth muscle and nonmuscle isoforms. In addition, using a separate promoter in an intron in the 3' region, it encodes telokin, a small protein identical in sequence to the C-terminus of myosin light chain kinase, that is independently expressed in smooth muscle and functions to stabilize unphosphorylated myosin filaments. A pseudogene is located on the p arm of chromosome 3. Four transcript variants that produce four isoforms of the calcium/calmodulin dependent enzyme have been identified as well as two transcripts that produce two isoforms of telokin. Additional variants have been identified but lack full length transcripts.

## Immunogen information

### Gene ID:

4638

### Uniprot

Q15746

### Synonyms:

MYLK; AAT7; KRP; MLCK; MLCK1; MLCK108; MLCK210; MSTP083; MYLK1; smMLCK

### Immunogen:

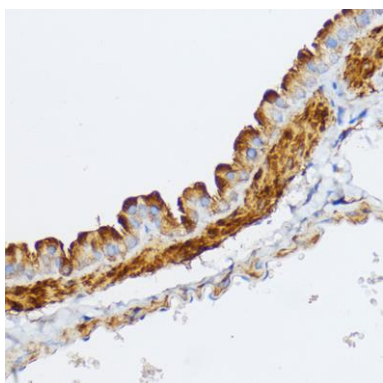
Recombinant fusion protein containing a sequence corresponding to amino acids 1765-1914 of human MYLK (NP\_444253.3).

### Storage:

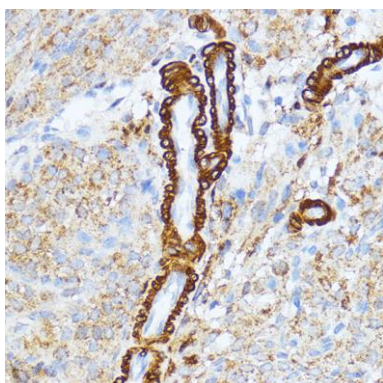
Store at -20°C. Avoid freeze / thaw cycles. Buffer: PBS with 0.02% sodium azide, 50% glycerol, pH7.3.

## Product Images

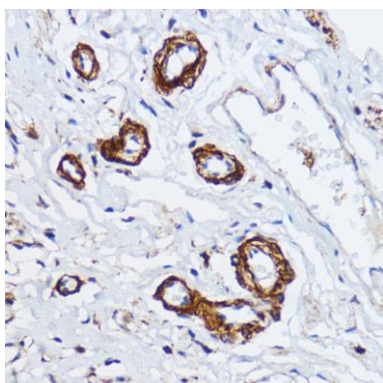
---



Immunohistochemistry of paraffin-embedded Mouse lung using MYLK Rabbit pAb (CAB8041) at dilution of 1:100 (40x lens).



Immunohistochemistry of paraffin-embedded Rat ovary using MYLK Rabbit pAb (CAB8041) at dilution of 1:100 (40x lens).



Immunohistochemistry of paraffin-embedded Human esophageal using MYLK Rabbit pAb (CAB8041) at dilution of 1:100 (40x lens).