

# STK4 Rabbit Polyclonal Antibody



CAB8043

## Product Information

### Size:

20uL, 50uL, 100uL, 200uL

### Observed MW:

56kDa

### Calculated MW:

52kDa/55kDa

### Applications:

WB IHC IF IP

### Reactivity:

Human, Mouse, Rat

## Protein Background

The protein encoded by this gene is a cytoplasmic kinase that is structurally similar to the yeast Ste20p kinase, which acts upstream of the stress-induced mitogen-activated protein kinase cascade. The encoded protein can phosphorylate myelin basic protein and undergoes autophosphorylation. A caspase-cleaved fragment of the encoded protein has been shown to be capable of phosphorylating histone H2B. The particular phosphorylation catalyzed by this protein has been correlated with apoptosis, and it's possible that this protein induces the chromatin condensation observed in this process.

## Immunogen information

### Gene ID:

6789

### Uniprot

Q13043

### Synonyms:

KRS2; MST1; YSK3; STK4

## Antibody Information

### Recommended dilutions:

WB 1:500 - 1:2000 IHC 1:50

- 1:200 IF 1:50 - 1:200 IP

1:50 - 1:200

### Source:

Rabbit

### Isotype:

IgG

### Purification:

Affinity purification

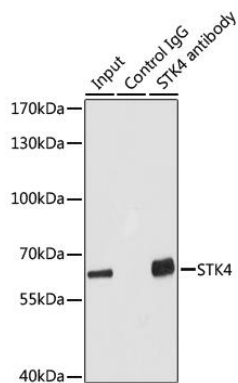
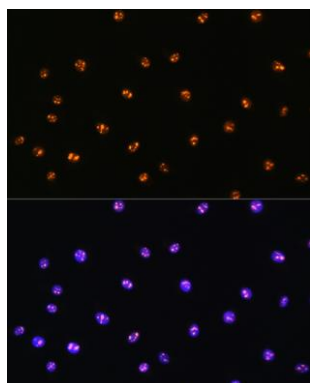
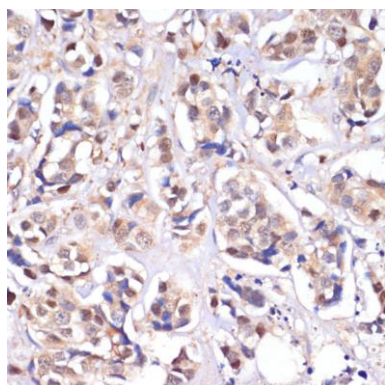
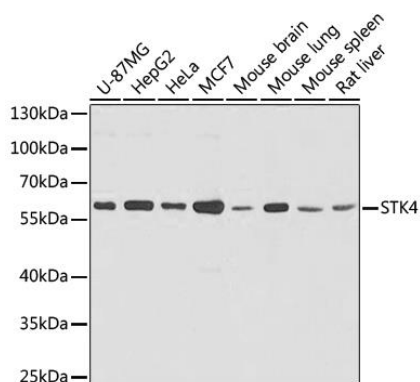
### Immunogen:

Recombinant fusion protein containing a sequence corresponding to amino acids 303-487 of human STK4 (NP\_006273.1).

### Storage:

Store at -20°C. Avoid freeze / thaw cycles. Buffer: PBS with 0.02% sodium azide, 50% glycerol, pH7.3.

## Product Images



Western blot analysis of extracts of various cells, using STK4 antibody (CAB8043) at 1:1000 dilution. Secondary antibody: HRP Goat Anti-Rabbit IgG (H+L) (CABS014) at 1:10000 dilution. Lysates/proteins: 25ug per lane. Blocking buffer: 3% nonfat dry milk in TBST. Detection: ECL Basic Kit (CABM00020). Exposure time: 15s.

Immunohistochemistry of paraffin-embedded human breast cancer using STK4 antibody (CAB8043) at dilution of 1:100 (40x lens).

Immunofluorescence analysis of L929 cells using STK4 Rabbit pAb (CAB8043) at dilution of 1:100. Blue: DAPI for nuclear staining.

Immunoprecipitation analysis of 100ug extracts of HepG2 cells using 3ug STK4 antibody (CAB8043). Western blot was performed from the immunoprecipitate using STK4 antibody (CAB8043) at a dilution of 1:1000.