

# CCR8 Rabbit Polyclonal Antibody



CAB8048

## Product Information

### Size:

20uL, 50uL, 100uL, 200uL

### Observed MW:

41kDa

### Calculated MW:

31kDa/40kDa

### Applications:

WB

### Reactivity:

Mouse, Rat

## Antibody Information

### Recommended dilutions:

WB 1:500 - 1:2000

### Source:

Rabbit

### Isotype:

IgG

### Purification:

Affinity purification

## Protein Background

This gene encodes a member of the beta chemokine receptor family, which is predicted to be a seven transmembrane protein similar to G protein-coupled receptors. Chemokines and their receptors are important for the migration of various cell types into the inflammatory sites. This receptor protein preferentially expresses in the thymus. I-309, thymus activation-regulated cytokine (TARC) and macrophage inflammatory protein-1 beta (MIP-1 beta) have been identified as ligands of this receptor. Studies of this receptor and its ligands suggested its role in regulation of monocyte chemotaxis and thymic cell apoptosis. More specifically, this receptor may contribute to the proper positioning of activated T cells within the antigenic challenge sites and specialized areas of lymphoid tissues. This gene is located at the chemokine receptor gene cluster region.

## Immunogen information

### Gene ID:

1237

### Uniprot

P51685

### Synonyms:

CCR8; CC-CKR-8; CCR-8; CDw198; CKRL1; CMKBR8; CMKBRL2; CY6; GPRCY6; TER1

### Immunogen:

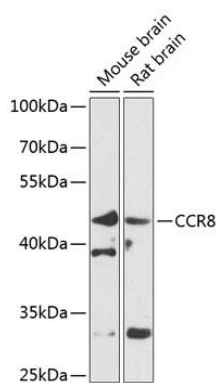
Recombinant fusion protein containing a sequence corresponding to amino acids 296-355 of human CCR8 (NP\_005192.1).

### Storage:

Store at -20°C. Avoid freeze / thaw cycles. Buffer: PBS with 0.02% sodium azide, 50% glycerol, pH7.3.

## Product Images

---



Western blot analysis of extracts of various cell lines, using CCR8 antibody (CAB8048) at 1:1000 dilution. Secondary antibody: HRP Goat Anti-Rabbit IgG (H+L) (CABS014) at 1:10000 dilution. Lysates/proteins: 25ug per lane. Blocking buffer: 3% nonfat dry milk in TBST. Detection: ECL Basic Kit (CABM00020). Exposure time: 90s.