

HMGCL Rabbit Polyclonal Antibody



CAB8052

Product Information

Size:

20uL, 50uL, 100uL, 200uL

Observed MW:

30kDa

Calculated MW:

20kDa/26kDa/34kDa

Applications:

WB IHC

Reactivity:

Human, Mouse, Rat

Protein Background

The protein encoded by this gene belongs to the HMG-CoA lyase family. It is a mitochondrial enzyme that catalyzes the final step of leucine degradation and plays a key role in ketone body formation. Mutations in this gene are associated with HMG-CoA lyase deficiency. Alternatively spliced transcript variants encoding different isoforms have been found for this gene.

Immunogen information

Gene ID:

3155

Uniprot

P35914

Synonyms:

HMGCL; HL

Antibody Information

Recommended dilutions:

WB 1:500 - 1:2000 IHC 1:50
- 1:200

Source:

Rabbit

Isotype:

IgG

Purification:

Affinity purification

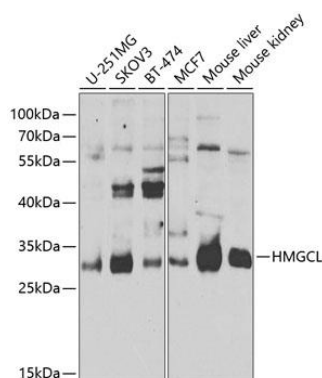
Immunogen:

Recombinant fusion protein containing a sequence corresponding to amino acids 1-325 of human HMGCL (NP_000182.2).

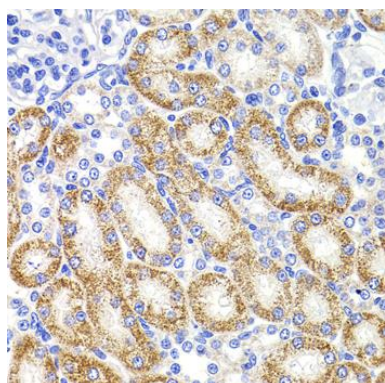
Storage:

Store at -20°C. Avoid freeze / thaw cycles. Buffer: PBS with 0.02% sodium azide, 50% glycerol, pH7.3.

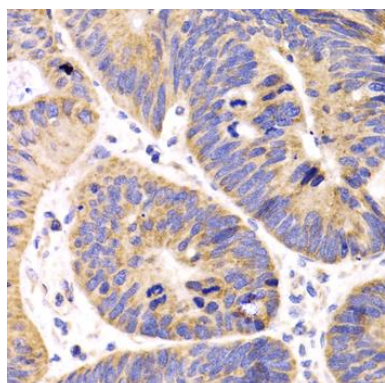
Product Images



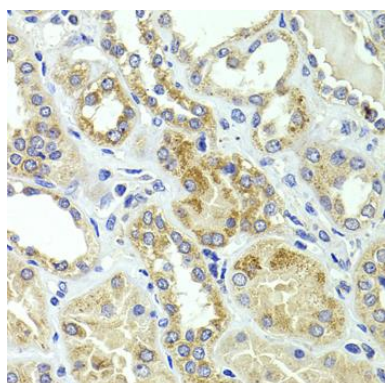
Western blot analysis of extracts of various cell lines, using HMGCL antibody (CAB8052) at 1:1000 dilution. Secondary antibody: HRP Goat Anti-Rabbit IgG (H+L) (CABS014) at 1:10000 dilution. Lysates/proteins: 25ug per lane. Blocking buffer: 3% nonfat dry milk in TBST. Detection: ECL Enhanced Kit (CABM00021). Exposure time: 15s.



Immunohistochemistry of paraffin-embedded rat kidney using HMGCL antibody (CAB8052) at dilution of 1:100 (40x lens).



Immunohistochemistry of paraffin-embedded human colon carcinoma using HMGCL antibody (CAB8052) at dilution of 1:100 (40x lens).



Immunohistochemistry of paraffin-embedded human kidney using HMGCL antibody (CAB8052) at dilution of 1:100 (40x lens).