

# STX7 Rabbit Polyclonal Antibody



CAB8057

## Product Information

### Size:

20uL, 50uL, 100uL, 200uL

### Observed MW:

40kDa

### Calculated MW:

27kDa/29kDa

### Applications:

WB IHC

### Reactivity:

Human, Mouse

## Protein Background

The protein encoded by this gene is a syntaxin family membrane receptor involved in vesicle transport. The encoded protein binds alpha-SNAP, an important regulator of transport vesicle fusion. Along with syntaxin 13, this protein plays a role in the ordered fusion of endosomes and lysosomes with the phagosome.

## Immunogen information

### Gene ID:

8417

### Uniprot

O15400

### Synonyms:

STX7

## Antibody Information

### Recommended dilutions:

WB 1:500 - 1:2000 IHC 1:50  
- 1:100

### Source:

Rabbit

### Isotype:

IgG

### Purification:

Affinity purification

### Immunogen:

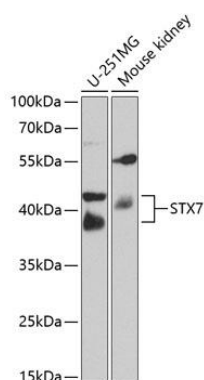
Recombinant fusion protein containing a sequence corresponding to amino acids 1-170 of human STX7 (NP\_003560.2).

### Storage:

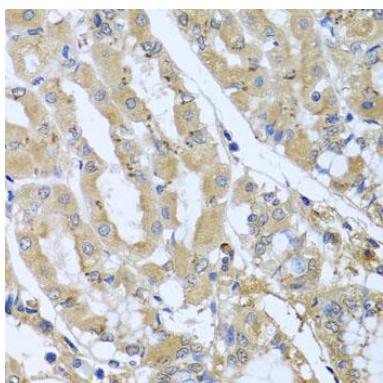
Store at -20°C. Avoid freeze / thaw cycles. Buffer: PBS with 0.02% sodium azide, 50% glycerol, pH7.3.

## Product Images

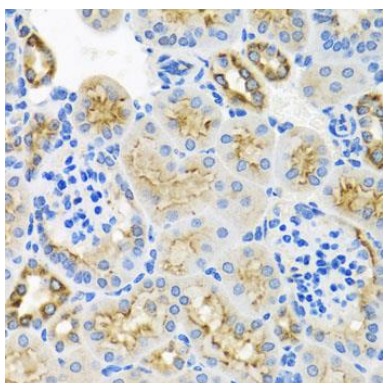
---



Western blot analysis of extracts of various cell lines, using STX7 antibody (CAB8057) at 1:1000 dilution. Secondary antibody: HRP Goat Anti-Rabbit IgG (H+L) (CABS014) at 1:10000 dilution. Lysates/proteins: 25ug per lane. Blocking buffer: 3% nonfat dry milk in TBST. Detection: ECL Basic Kit (CABM00020). Exposure time: 90s.



Immunohistochemistry of paraffin-embedded human stomach using STX7 antibody (CAB8057) at dilution of 1:100 (40x lens).



Immunohistochemistry of paraffin-embedded mouse kidney using STX7 antibody (CAB8057) at dilution of 1:100 (40x lens).