

CNOT8 Rabbit Polyclonal Antibody



CAB8058

Product Information

Size:

20uL, 50uL, 100uL, 200uL

Observed MW:

34kDa

Calculated MW:

21kDa/27kDa/33kDa

Applications:

WB IHC

Reactivity:

Human, Mouse

Antibody Information

Recommended dilutions:

WB 1:500 - 1:2000 IHC 1:50
- 1:200

Source:

Rabbit

Isotype:

IgG

Purification:

Affinity purification

Protein Background

Immunogen information

Gene ID:

9337

Uniprot

Q9UFF9

Synonyms:

CNOT8; CAF1; CALIF; Caf1b; POP2; hCAF1

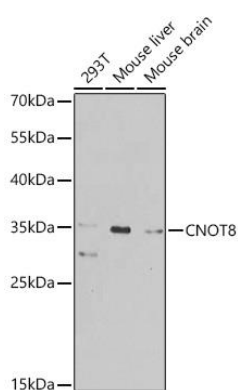
Immunogen:

Recombinant fusion protein containing a sequence corresponding to amino acids 1-292 of human CNOT8 (NP_004770.4).

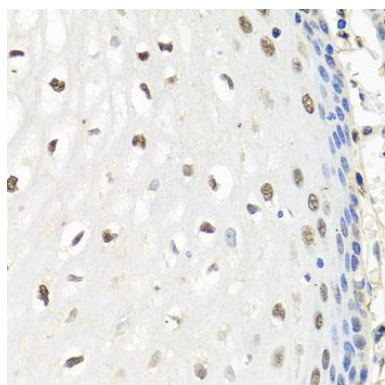
Storage:

Store at -20°C. Avoid freeze / thaw cycles. Buffer: PBS with 0.02% sodium azide, 50% glycerol, pH7.3.

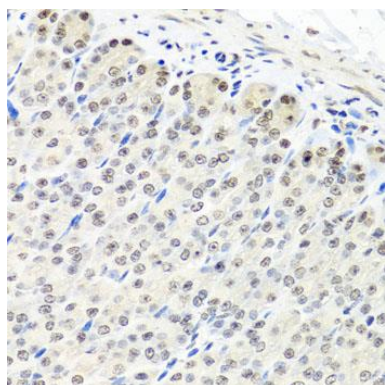
Product Images



Western blot analysis of extracts of various cell lines, using CNOT8 antibody (CAB8058) at 1:1000 dilution. Secondary antibody: HRP Goat Anti-Rabbit IgG (H+L) (CABS014) at 1:10000 dilution. Lysates/proteins: 25ug per lane. Blocking buffer: 3% nonfat dry milk in TBST. Detection: ECL Basic Kit (CABM00020). Exposure time: 90s.



Immunohistochemistry of paraffin-embedded human esophagus using CNOT8 antibody (CAB8058) at dilution of 1:100 (40x lens).



Immunohistochemistry of paraffin-embedded mouse stomach using CNOT8 antibody (CAB8058) at dilution of 1:100 (40x lens).