

MCRS1 Rabbit Polyclonal Antibody



CAB8061

Product Information

Size:

20uL, 50uL, 100uL, 200uL

Observed MW:

55kDa

Calculated MW:

31kDa/50kDa/51kDa/53kDa

Applications:

WB

Reactivity:

Human, Mouse

Antibody Information

Recommended dilutions:

WB 1:500 - 1:2000

Source:

Rabbit

Isotype:

IgG

Purification:

Affinity purification

Protein Background

Immunogen information

Gene ID:

10445

Uniprot

Q96EZ8

Synonyms:

MCRS1; ICP22BP; INO80Q; MCRS2; MSP58; P78

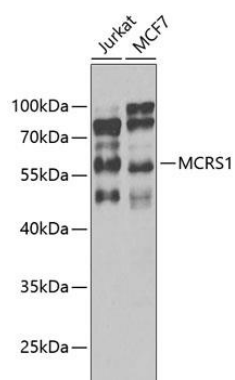
Immunogen:

Recombinant fusion protein containing a sequence corresponding to amino acids 203-462 of human MCRS1 (NP_006328.2).

Storage:

Store at -20°C. Avoid freeze / thaw cycles. Buffer: PBS with 0.02% sodium azide, 50% glycerol, pH7.3.

Product Images



Western blot analysis of extracts of various cell lines, using MCRS1 antibody (CAB8061) at 1:1000 dilution. Secondary antibody: HRP Goat Anti-Rabbit IgG (H+L) (CABS014) at 1:10000 dilution. Lysates/proteins: 25ug per lane. Blocking buffer: 3% nonfat dry milk in TBST. Detection: ECL Enhanced Kit (CABM00021). Exposure time: 10s.