

MTCH1 Rabbit Polyclonal Antibody



CAB8063

Product Information

Size:

20uL, 50uL, 100uL, 200uL

Observed MW:

45-50kDa

Calculated MW:

19kDa/39kDa/41kDa

Applications:

WB IHC

Reactivity:

Human, Mouse, Rat

Antibody Information

Recommended dilutions:

WB 1:500 - 1:2000 IHC 1:50
- 1:200

Source:

Rabbit

Isotype:

IgG

Purification:

Affinity purification

Protein Background

This gene encodes a member of the mitochondrial carrier family. The encoded protein is localized to the mitochondrion inner membrane and induces apoptosis independent of the proapoptotic proteins Bax and Bak. Pseudogenes on chromosomes 6 and 11 have been identified for this gene. Alternatively spliced transcript variants encoding multiple isoforms have been observed.

Immunogen information

Gene ID:

23787

Uniprot

Q9NZJ7

Synonyms:

MTCH1; CGI-64; PIG60; PSAP; SLC25A49

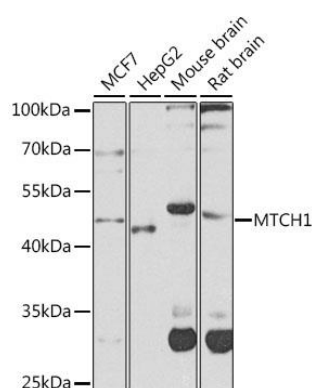
Immunogen:

Recombinant fusion protein containing a sequence corresponding to amino acids 100-250 of human MTCH1 (NP_001258570.1).

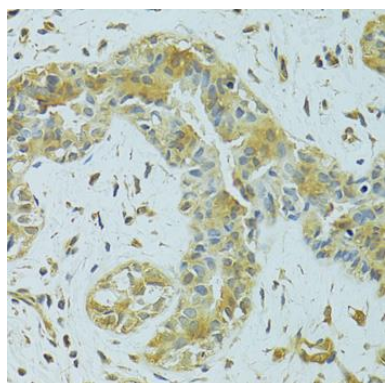
Storage:

Store at -20°C. Avoid freeze / thaw cycles. Buffer: PBS with 0.02% sodium azide, 50% glycerol, pH7.3.

Product Images



Western blot analysis of extracts of various cell lines, using MTCH1 antibody (CAB8063) at 1:1000 dilution. Secondary antibody: HRP Goat Anti-Rabbit IgG (H+L) (CABS014) at 1:10000 dilution. Lysates/proteins: 25ug per lane. Blocking buffer: 3% nonfat dry milk in TBST. Detection: ECL Enhanced Kit (CABM00021). Exposure time: 30s.



Immunohistochemistry of paraffin-embedded human breast cancer using MTCH1 antibody (CAB8063) at dilution of 1:100 (40x lens).