

PHF19 Rabbit Polyclonal Antibody



CAB8065

Product Information

Size:

20uL, 50uL, 100uL, 200uL

Observed MW:

66kDa

Calculated MW:

14kDa/22kDa/65kDa

Applications:

WB IHC IF

Reactivity:

Human, Mouse, Rat

Antibody Information

Recommended dilutions:

WB 1:500 - 1:2000 IHC 1:50
- 1:200 IF 1:50 - 1:100

Source:

Rabbit

Isotype:

IgG

Purification:

Affinity purification

Protein Background

Immunogen information

Gene ID:

26147

Uniprot

Q5T6S3

Synonyms:

PHF19; MTF2L1; PCL3; TDRD19B

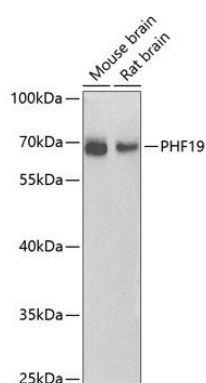
Immunogen:

Recombinant fusion protein containing a sequence corresponding to amino acids 1-207 of human PHF19 (NP_001009936.1).

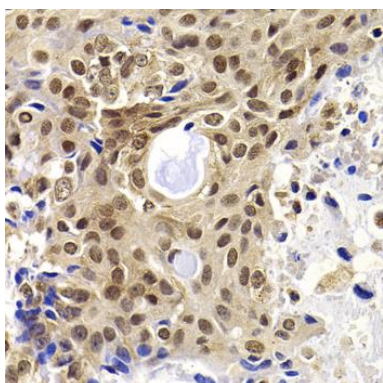
Storage:

Store at -20°C. Avoid freeze / thaw cycles. Buffer: PBS with 0.02% sodium azide, 50% glycerol, pH7.3.

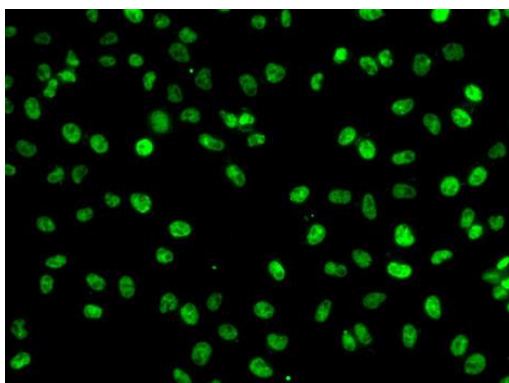
Product Images



Western blot analysis of extracts of various cell lines, using PHF19 antibody (CAB8065) at 1:1000 dilution. Secondary antibody: HRP Goat Anti-Rabbit IgG (H+L) (CABS014) at 1:10000 dilution. Lysates/proteins: 25ug per lane. Blocking buffer: 3% nonfat dry milk in TBST. Detection: ECL Basic Kit (CABM00020). Exposure time: 90s.



Immunohistochemistry of paraffin-embedded human oophoroma using PHF19 antibody (CAB8065) at dilution of 1:100 (40x lens).



Immunofluorescence analysis of A-549 cells using PHF19 antibody (CAB8065).