

SETD3 Rabbit Polyclonal Antibody



CAB8071

Product Information

Size:

20uL, 50uL, 100uL, 200uL

Observed MW:

70kDa

Calculated MW:

32kDa/33kDa/67kDa

Applications:

WB IP

Reactivity:

Human, Mouse

Antibody Information

Recommended dilutions:

WB 1:500 - 1:2000 IP 1:50 - 1:100

Source:

Rabbit

Isotype:

IgG

Purification:

Affinity purification

Protein Background

Immunogen information

Gene ID:

84193

Uniprot

Q86TU7

Synonyms:

SETD3; C14orf154

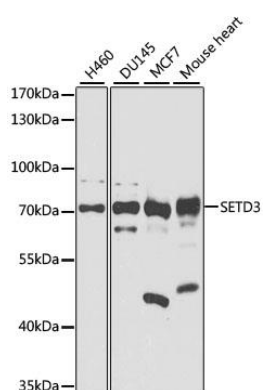
Immunogen:

A synthetic peptide corresponding to a sequence within amino acids 1-100 of human SETD3 (NP_115609.2).

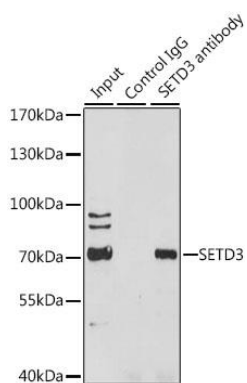
Storage:

Store at -20°C. Avoid freeze / thaw cycles. Buffer: PBS with 0.02% sodium azide, 50% glycerol, pH7.3.

Product Images



Western blot analysis of extracts of various cell lines, using SETD3 antibody (CAB8071) at 1:1000 dilution. Secondary antibody: HRP Goat Anti-Rabbit IgG (H+L) (CABS014) at 1:10000 dilution. Lysates/proteins: 25ug per lane. Blocking buffer: 3% nonfat dry milk in TBST. Detection: ECL Basic Kit (CABM00020). Exposure time: 30s.



Immunoprecipitation analysis of 200ug extracts of HeLa cells, using 3 ug SETD3 antibody (CAB8071). Western blot was performed from the immunoprecipitate using SETD3 antibody (CAB8071) at a dilution of 1:1000.