

# CPS1 Rabbit Polyclonal Antibody



CAB8080

## Product Information

### Size:

20uL, 50uL, 100uL, 200uL

### Observed MW:

165kDa

### Calculated MW:

116kDa/164kDa/165kDa

### Applications:

WB IF

### Reactivity:

Human, Mouse, Rat

## Antibody Information

### Recommended dilutions:

WB 1:1000 - 1:2000 IF 1:50  
- 1:200

### Source:

Rabbit

### Isotype:

IgG

### Purification:

Affinity purification

## Protein Background

The mitochondrial enzyme encoded by this gene catalyzes synthesis of carbamoyl phosphate from ammonia and bicarbonate. This reaction is the first committed step of the urea cycle, which is important in the removal of excess urea from cells. The encoded protein may also represent a core mitochondrial nucleoid protein. Three transcript variants encoding different isoforms have been found for this gene. The shortest isoform may not be localized to the mitochondrion. Mutations in this gene have been associated with carbamoyl phosphate synthetase deficiency, susceptibility to persistent pulmonary hypertension, and susceptibility to venoocclusive disease after bone marrow transplantation.

## Immunogen information

### Gene ID:

1373

### Uniprot

P31327

### Synonyms:

CPS1; CPSASE1; PHN

### Immunogen:

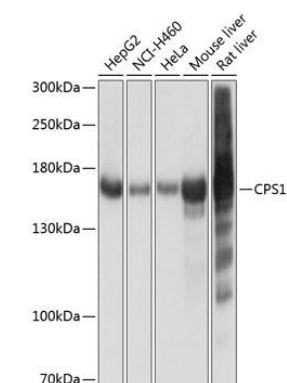
Recombinant fusion protein containing a sequence corresponding to amino acids 820-930 of human CPS1 (NP\_001116105.1).

### Storage:

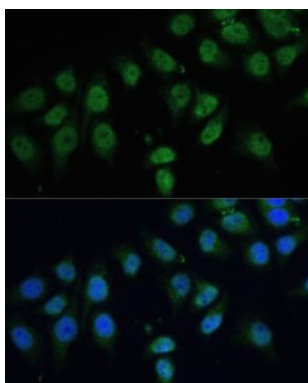
Store at -20°C. Avoid freeze / thaw cycles. Buffer: PBS with 0.02% sodium azide, 50% glycerol, pH7.3.

## Product Images

---



Western blot analysis of extracts of various cell lines, using CPS1 antibody (CAB8080) at 1:1000 dilution. Secondary antibody: HRP Goat Anti-Rabbit IgG (H+L) (CABS014) at 1:10000 dilution. Lysates/proteins: 25ug per lane. Blocking buffer: 3% nonfat dry milk in TBST. Detection: ECL Basic Kit (CABM00020). Exposure time: 1s.



Immunofluorescence analysis of HeLa cells using CPS1 Polyclonal Antibody (CAB8080) at dilution of 1:100 (40x lens). Blue: DAPI for nuclear staining.