

# MonoMethyl-NONO-R357/R365 Rabbit Polyclonal Antibody

## CAB8087



### Product Information

**Size:**

20uL, 50uL, 100uL, 200uL

**Observed MW:**

Refer to figures

**Calculated MW:**

43kDa/54kDa

**Applications:**

WB IHC IF

**Reactivity:**

Human, Rat

### Protein Background

This gene encodes an RNA-binding protein which plays various roles in the nucleus, including transcriptional regulation and RNA splicing. A rearrangement between this gene and the transcription factor E3 gene has been observed in papillary renal cell carcinoma. Alternatively spliced transcript variants have been described. Pseudogenes exist on Chromosomes 2 and 16.

### Immunogen information

**Gene ID:**

4841

**Uniprot**

Q15233

**Synonyms:**

NONO; MRXS34; NMT55; NRB54; P54; P54NRB; PPP1R114

### Antibody Information

**Recommended dilutions:**

WB 1:500 - 1:2000 IHC 1:50  
- 1:100 IF 1:50 - 1:100

**Source:**

Rabbit

**Isotype:**

IgG

**Purification:**

Affinity purification

**Immunogen:**

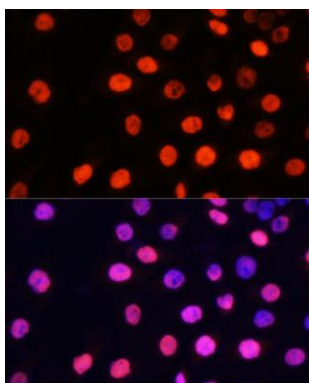
A synthetic peptide of human NONO

**Storage:**

Store at -20°C. Avoid freeze / thaw cycles. Buffer: PBS with 0.02% sodium azide, 50% glycerol, pH7.3.

## Product Images

---



Immunofluorescence analysis of HeLa cells using MonoMethyl-NONO-R357/R365 pAb (CAB8087) at dilution of 1:100 (40x lens). Blue: DAPI for nuclear staining.