

# NKX3-2 Rabbit Polyclonal Antibody



CAB8093

---

## Product Information

### Size:

20uL, 50uL, 100uL, 200uL

### Observed MW:

35kDa

### Calculated MW:

34kDa

### Applications:

WB

### Reactivity:

Human

## Antibody Information

### Recommended dilutions:

WB 1:500 - 1:2000

### Source:

Rabbit

### Isotype:

IgG

### Purification:

Affinity purification

## Protein Background

This gene encodes a member of the NK family of homeobox-containing proteins. The encoded protein may play a role in skeletal development.

## Immunogen information

### Gene ID:

579

### Uniprot

P78367

### Synonyms:

NKX3-2; BAPX1; NKX3.2; NKX3B; SMMD

### Immunogen:

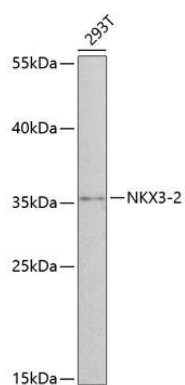
Recombinant fusion protein containing a sequence corresponding to amino acids 1-180 of human NKX3-2 (NP\_001180.1).

### Storage:

Store at -20°C. Avoid freeze / thaw cycles. Buffer: PBS with 0.02% sodium azide, 50% glycerol, pH7.3.

## Product Images

---



Western blot analysis of extracts of 293T cells, using NKX3-2 antibody (CAB8093) at 1:3000 dilution. Secondary antibody: HRP Goat Anti-Rabbit IgG (H+L) (CABS014) at 1:10000 dilution. Lysates/proteins: 25ug per lane. Blocking buffer: 3% nonfat dry milk in TBST. Detection: ECL Basic Kit (CABM00020). Exposure time: 90s.