

Gm13125 Rabbit Polyclonal Antibody



CAB8095

Product Information

Size:

20uL, 50uL, 100uL, 200uL

Observed MW:

55kDa

Calculated MW:

55kDa

Applications:

WB IHC

Reactivity:

Human, Mouse, Rat

Antibody Information

Recommended dilutions:

WB 1:500 - 1:2000 IHC

1:100 - 1:200

Source:

Rabbit

Isotype:

IgG

Purification:

Affinity purification

Protein Background

Immunogen information

Gene ID:

627009

Uniprot

Q5VT98

Synonyms:

PRAMEF20; PRAMEF21; Gm13125

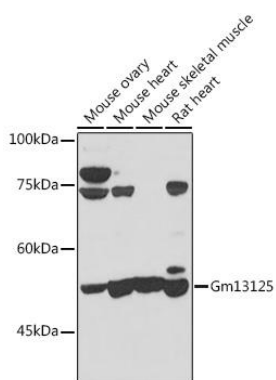
Immunogen:

Recombinant fusion protein containing a sequence corresponding to amino acids 67-274 of mouse Gm13125 (NP_001108549.1).

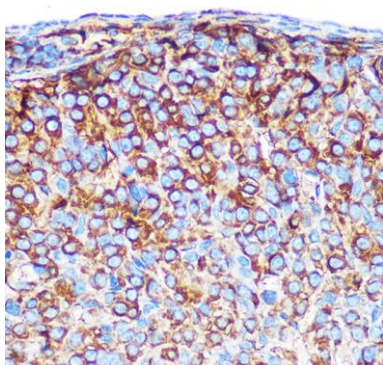
Storage:

Store at -20°C. Avoid freeze / thaw cycles. Buffer: PBS with 0.02% sodium azide, 50% glycerol, pH7.3.

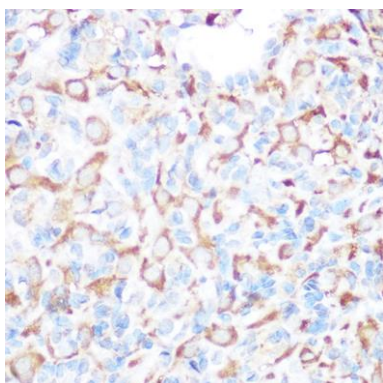
Product Images



Western blot analysis of extracts of various cell lines, using Gm13125 antibody (CAB8095) at 1:1000 dilution. Secondary antibody: HRP Goat Anti-Rabbit IgG (H+L) (CABS014) at 1:10000 dilution. Lysates/proteins: 25ug per lane. Blocking buffer: 3% nonfat dry milk in TBST. Detection: ECL Basic Kit (CABM00020). Exposure time: 30s.



Immunohistochemistry of paraffin-embedded mouse ovary using Gm13125 Rabbit pAb (CAB8095) at dilution of 1:100 (40x lens).



Immunohistochemistry of paraffin-embedded rat ovary using Gm13125 Rabbit pAb (CAB8095) at dilution of 1:100 (40x lens).