

# LLGL2 Rabbit Polyclonal Antibody



CAB8099

## Product Information

### Size:

20uL, 50uL, 100uL, 200uL

### Observed MW:

114kDa

### Calculated MW:

114kDa

### Applications:

WB IHC

### Reactivity:

Human, Mouse

## Antibody Information

### Recommended dilutions:

WB 1:500 - 1:2000 IHC  
1:100 - 1:200

### Source:

Rabbit

### Isotype:

IgG

### Purification:

Affinity purification

## Protein Background

The lethal (2) giant larvae protein of *Drosophila* plays a role in asymmetric cell division, epithelial cell polarity, and cell migration. This human gene encodes a protein similar to lethal (2) giant larvae of *Drosophila*. In fly, the protein's ability to localize cell fate determinants is regulated by the atypical protein kinase C (aPKC). In human, this protein interacts with aPKC-containing complexes and is cortically localized in mitotic cells. Alternative splicing results in multiple transcript variants encoding different isoforms.

## Immunogen information

### Gene ID:

217325

### Uniprot

### Synonyms:

LLGL2; HGL; Hugl-2; LGL2

### Immunogen:

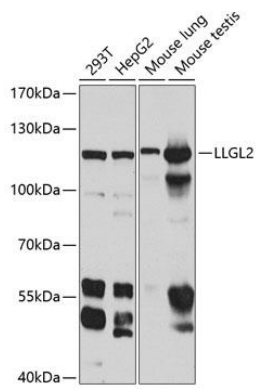
A synthetic peptide corresponding to a sequence within amino acids 900-1000 of mouse LLGL2 (NP\_663413.2).

### Storage:

Store at -20°C. Avoid freeze / thaw cycles. Buffer: PBS with 0.02% sodium azide, 50% glycerol, pH7.3.

## Product Images

---



Western blot - LLGL2 Polyclonal Antibody (CAB8099)